

Reflection Water Level Gauge PN 40 NIVOFLEX Type 22/230

page 1 of 2

The liquid water level gauge type NIVOFLEX 22/230 is an universal reflection gauge for heating and refrigeration as well as for storage vessels. Reflection water level gauges are equipped with sight glasses with grooves for a clear contrast in the display.

Design

The water level gauge type NIVOFLEX 22/230 is designed in accordance to the relevant German rules (TRD, AD, DIN).

Technical data

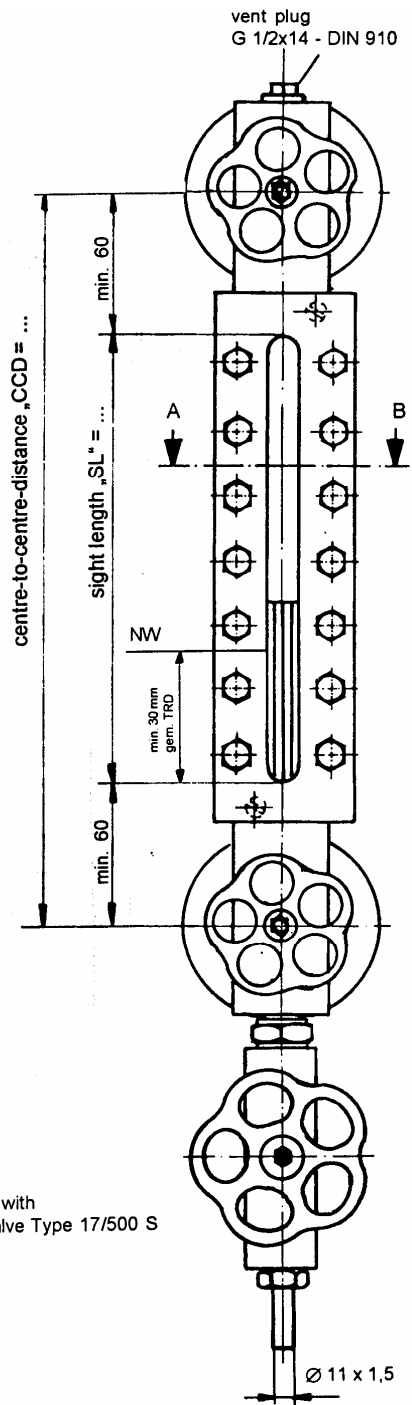
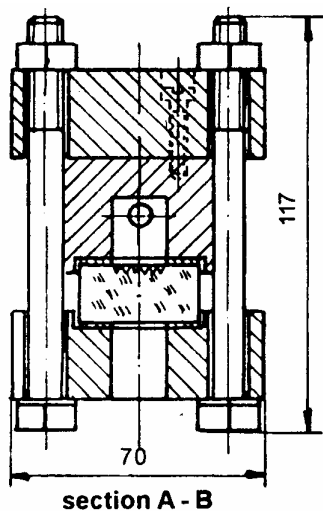
- glass holder in front with reflex sight glasses
- glass size 2 up to 9 according to DIN 7081
- glassholder acc. necessary centre-to-centre distance with one or more sight lengths with interruptions between the different visual indications (see on reverse)
- integrated valves below and above,
- internal valve diameter 8 mm
- process connection: flange DN 20-25/PN 40, form C
- with drain valve type 17/500
- vent plug G 1/2 x 14 mm, DIN 910

Material

- glass holder made of stainless steel mat. 1.4571
- connection flanges made of stainless steel mat. 1.4571
- drain valve made of stainless steel mat. 1.4571
- shut off parts made of stainless steel mat. 1.4401, 1.4571
- reflection glass made of borosilicate, gaskets free of asbestos

Additional equipment

- automatically closing ball for shut off valves (safety device) (min. 1 bar overpressure necessary for function)
- mica protection outside for protection in outdoor installations
- NW-mark for lowest water level acc. TRD



Reflection Water Level Gauge PN 40 NIVOFLEX Type 22/230

Table glass size / range of centre-to-centre-distance

glass size *	2	3	4	5	6	7	8	9
glass length (mm)	140	165	190	220	250	280	320	340
sight length „SL“ per segment (mm)	120	145	170	200	230	260	300	320
min. centre-to-centre-distance (mm)								
1 x glass size	240	265	290	320	350	380	420	440
2 x glass size				565	625	685	765	805
3 x glass size				810	900	990	1110	1170
4 x glass size				1055	1175	1295	1455	1535
5 x glass size				1300	1450	1600	1800	1900

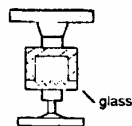
* reflection glass DIN 7081, width = 34 mm, thickness = 17 mm

sight length = min. centre-to-centre-distance - 120 mm
interruption between 2 sight glasses: min 45 mm

conditions:

nominal pressure PN 40 (with drain valve)	
oper. temperature	operating pressure
-10 up to 120 °C	40 bar
-10 up to 200 °C	35 bar
-10 up to 243 °C	32 bar
max. limit for reflection glass DIN 7081 = 243 °C	
design up to -60 °C for request	

arrangement „C“:



↑
direction of view

order data

centre-to-centre-distance, flange size, glass size, operating pressure, operating temperature, fluid, additional equipment