

Transducer	Product group 720	
	Type 0642	
	Sheet: 1/1	Revision: 2
	Date: 7/03	



Con-
 nection
 type
 büchiflex
 sphere
 DN 25
 Level

Field of application

This Optoelectronic limit sensor is for signalling liquid level and interface limits. A big advantage is that to a great extent the optoelectronic sensor works independently of physical properties such as density, dielectric constant, conductivity or colour. The very compact construction only needs a minimum of space and also enables it to measure very small volume levels. It can be used for Ex Zone 0 and Zone 1.

General Data

Accuracy: ±0,5 mm
 Reproducibility: ±0,1 mm
 Difference of Refractive Index for interface measurement min.: 0,02 R.I.
 Light source: IR-Light 930 nm
 Ambient light: max. 100 Lux
 ML max: Borsilikat glass: 250 mm
 Quartz: 500 mm

Mounting direction:

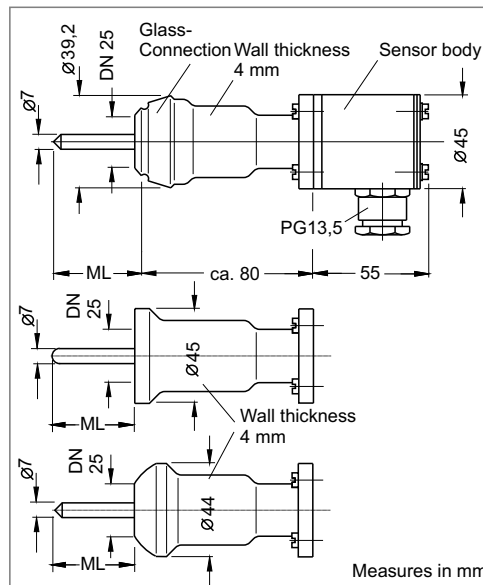
Minimum distance Sensor tip to any surface: > 10 mm
 Connection: Büchi sphere, KF sphere, DN 25
 Weight: ca. 0,4 kg + 1,3 g/cm ML

Design Data

Operating temperature: -50 to +200 °C (with PTFE-sealing)
 Ambient temperature: -50 to +95 °C
 Operating pressure: 0 -1 MPa (0 - 10 bar)
 Material Sensor/housing: Borosilikat glass 3.3, Quartz
 Material light guide: Borosilikat glass 3.3, Quartz
 Material sensor body: Stainless steel
 Ex protection: II 1/2 G EEx ib IIC T5, T6
 T6: to 60 °C, T5: to 75 °C

Electrical Data

Cable gland: M20x1,5, for Ex blue
 Screw terminals: 3 * 2,5 mm2
 Ingress protection EN 60529: IP 65



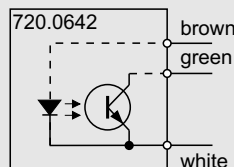
Connection type
 büchiflex sphere
 DN 25
 Level

Connection type
 büchiflex flat
 ground seal DN 25
 Interface

Connection type
 sphere KF 25
 DN 25
 Level

Measures in mm

Connection Diagram



Certificates

EC-Type Examination Certificate: ZELM 02 ATEX 0087
 Zone 0 + 1, ASEV is included in ATEX
 Subject to alterations!

Ordering no.

7 2 0 . X 1 X 3 0 0 X X X . 0 6 4 2 X ? ? ? ? ? ? ?

1=Standard
 2=Ex

1=Level
 2=Interface

ML XXX in cm
 e.g.:
 150 mm=015

B=büchiflex sphere
 P=büchiglass
 flat ground seal
 K=KF sphere

?=Code not in use

PHÖNiX

Messtechnik GmbH
 Salzschlirfer Straße 13
 D-60386 Frankfurt/M.
 Tel. +49/69/41 67 42 -20
 Fax +49/69/41 67 42 - 29
 sales@phoenix-mt.com
 www.phoenix-mt.com

