

www.phoenix-mt.com
PHÖNiX Messtechnik GmbH

PHÖNiX

Boiler level gauge CL600 to CL900

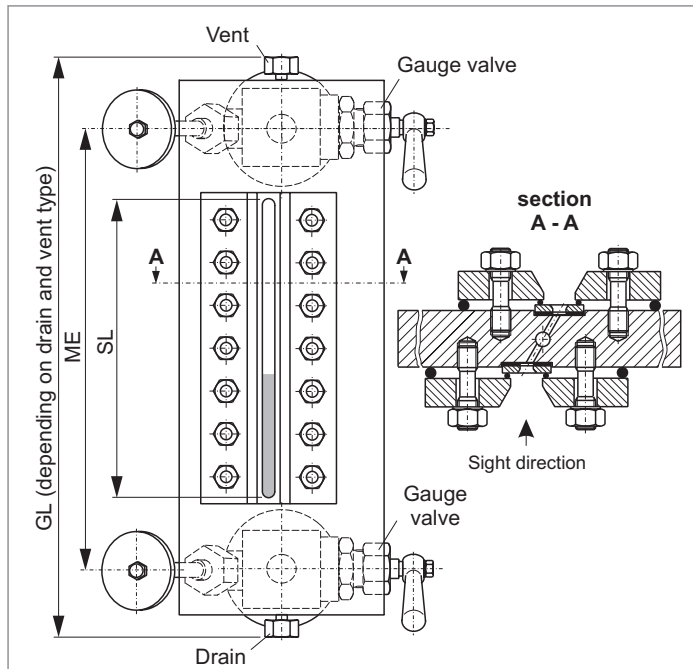
Black and white indication
Refraction type
Connection side-side fixed
Connection gauge valve to gauge chamber: flange
Double shut-off, hand wheel and quick closing

Product group **703**

Type **60**

Sheet: 13 Revision: 0

Date: 08/05



Field of Application

Direct reading liquid level indicator for boiler level up to CL900. Suitable for camera monitoring. Increased safety with ball check valves.

General Data

Visible length SL: <ME
Body: 200 x 45
Connection gauge valve - body: flange
Gauge valve types: see data sheet 760.40
Actuation: hand wheel and quick closing lever
Material sight window: mica
Material media wetted parts: CS, SS
Depending on delivery situation material can vary.
Types with special materials are available.
Weight
- ME 340/400/450/500 mm: 55,0/60,0/65,0/70,0 kg
Depending on execution weight can vary.

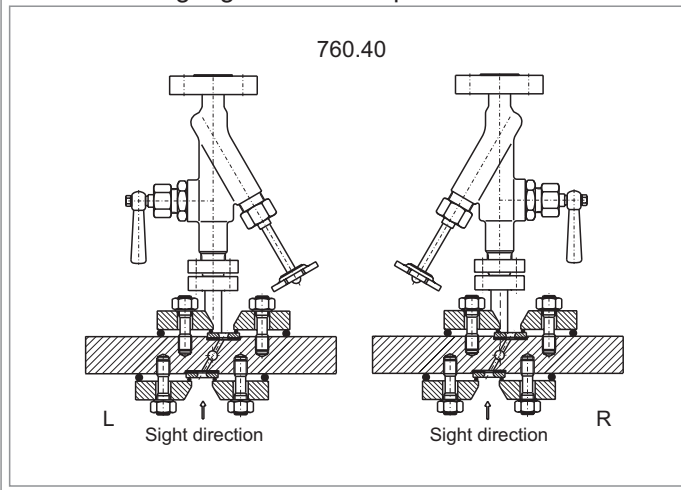
Design Data

Design pressure/-temperature: see derating data sheet BG00RJ

Further Data

Process connection: see 703.VAR
Vent: see 703.VAR
Drain: see 703.VAR

Orientation of gauge valve and operation



Accessories

Illumination: see accessories catalogue 700
Scale: see accessories catalogue 700
Pointer low water: see accessories catalogue 703

CS (= carbon steel) and SS (= stainless steel type 316SS) are materials suitable for Pressure Vessels according to EN or ASME.

Subject to alterations

Ordering no.

7 0 3 6 X X X 4 0 X X X - 0 0 - 0 0 X X X X X X - X X X X		see 703.VAR	ME [mm]
Connection	fixed 0	results from ME	field type
gauge head	pivoted 4	X spec. field types	
bridging	without 0		
	with 1		
window	mica transparent 2	DIN-bolts, -nuts	DIN/ASME
gauge valve	760.40 4 0 X	A ANSI-bolts, -nuts	
		G 200x45 (transparent)	gauge body
		see data sheet 760.40	orientation
			gauge valve

PHÖNiX

Messtechnik GmbH
Salzschlirfer Straße 13
D-60386 Frankfurt/M.
Tel. +49/69/41 67 42 -20
Fax +49/69/41 67 42 - 29
sales@phoenix-mt.com
www.phoenix-mt.com

PHÖNiX