

www.phoenix-mt.com
PHÖNIX Messtechnik GmbH

PHÖNIX

Sight glass level gauge CL150 to 600

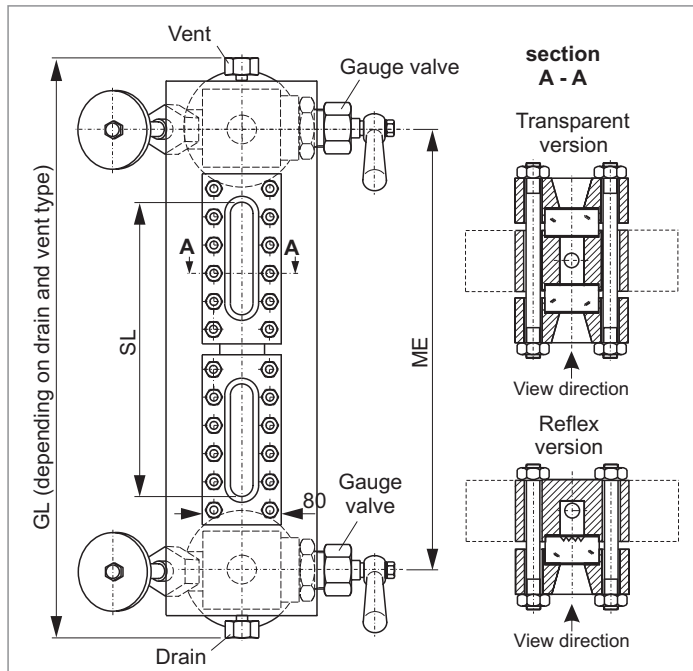
Heavy duty execution
Reflex, Transparent
Connection side-side fixed
Connection gauge valve to gauge chamber: flange
Double shut-off, hand wheel and quick closing

Product group **703**

Type **40**

Sheet: 9 Revision: 0

Date: 08/05



Field of Application

Direct reading liquid level indicator for boiler level up to CL600 (depends on glass type). Increased safety with ball check valves.

General Data

Visible length SL: \leq ME-130 mm
Body: 80x40, 100x40, 120x40, 140x40
Connection gauge valve - body: flange
Gauge valve types: s. Datenblatt 760.40
Actuation: hand wheel and quick closing lever
Material glass plates acc. to DIN 7081: Borosilicate, mica protection
Material media wetted parts: CS, SS
Depending on delivery situation material can vary.
Types with special materials are available.
Weight
- basic weight (glass type 4-11)
 reflex / transparent: 21.0-27.0/24.0-32.0 kg
- per segment (glass type 4-11)
 reflex / transparent: 7.9-15.6/10.4-19.8 kg
Depending on execution weight can vary.

Design Data

Design pressure/-temperature see derating
80x40, 100x40,
120x40, 140x40: data sheet BG00RA-00RD

Further Data

Connection gauge valve - body: see 703.VAR
Process connection: see 703.VAR
Vent: see 703.VAR
Drain: see 703.VAR

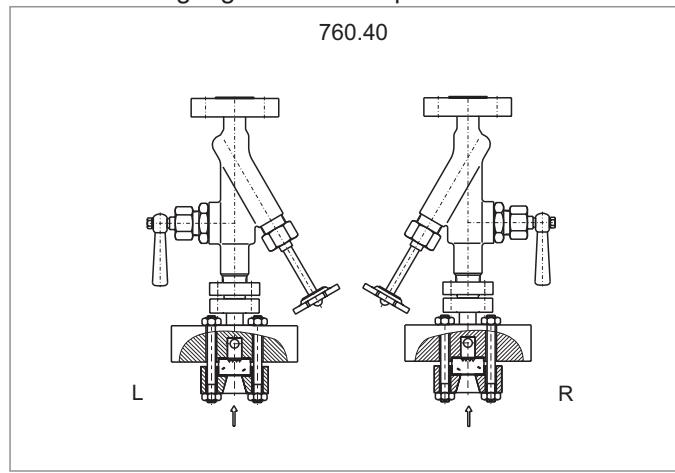
Accessories

Glass protection etc.: see accessories catalogue 700
Frosts protection: see accessories catalogue 700
Illumination: see accessories catalogue 700
Scale: see accessories catalogue 700
Pointer low water: see accessories catalogue 703
Heating: see accessories catalogue 700

CS (= carbon steel) and SS (= stainless steel type 316SS) are materials suitable for Pressure Vessels according to EN or ASME.

Subject to alterations

Orientation of gauge valve and operation



Ordering no.

7 0 3 4 0 X X X X X X X X - X X - X X X X X X X X X X - X X X X		see 703.VAR	ME [mm]
bridging	without	0	results from ME
	with	1	
glass window	Reflex (DIN 7081)	1	nos of segments
	Transparent (DIN 7081)	2	
gauge valve	760.40	4 0	DIN-bolts, -nuts
			A ANSI-bolts, -nuts
			DIN/ASME
			X 17, A - D, depends on design pressure
			X see data sheet 760.14/15/16/17
			gauge body
			orientation
			gauge valve

PHÖNIX

Messtechnik GmbH
Salzschlirfer Straße 13
D-60386 Frankfurt/M.
Tel. +49/69/41 67 42 -20
Fax +49/69/41 67 42 - 29
sales@phoenix-mt.com
www.phoenix-mt.com

PHÖNIX