

www.phoenix-mt.com
PHÖNiX Messtechnik GmbH

PHÖNiX

Sight glass level gauge CL150 to 600

Heavy duty execution
Reflex, Transparent
Connection side-side fixed
Connection gauge valve to gauge chamber: flange
Quick closing

Product group **700**

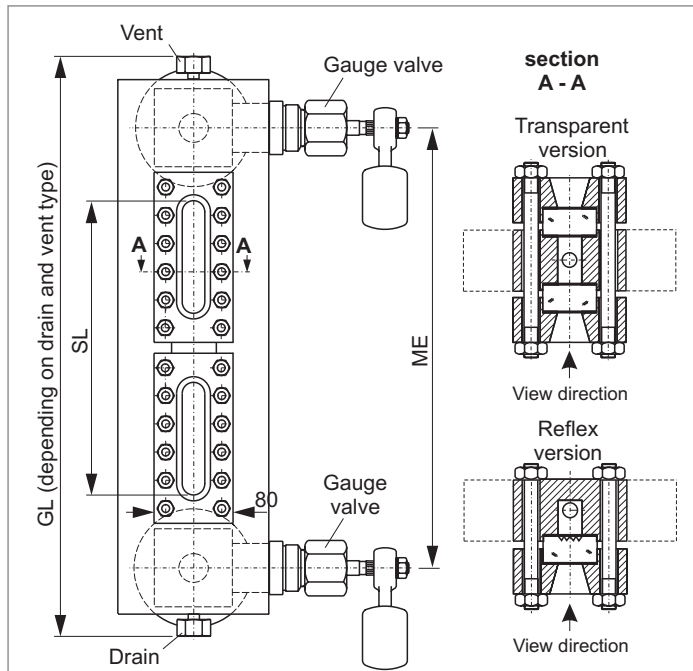
Type **56**

Sheet: 25

Revision: 0

Date:

02/05



Field of Application

Direct reading liquid level indicator for general applications up to CL900 (depends on glass type). Increased safety with ball check valves.

General Data

Visible length SL: ≤ME-130 mm
Body: 75x30, 80x40, 100x40, 120x40, 140x40
Connection gauge valve - body: flange
Gauge valve types: s. Datenblatt 760.14/15/16/17
Actuation: quick closing
Material glass plates acc. to DIN 7081: Borosilicate
Material media wetted parts: CS, SS
Depending on delivery situation material can vary.
Types with special materials e. g. Hastelloy, Monel etc. are available.
Weight
- basic weight (glass type 4-11)
 reflex / transparent: 21.0-27.0/24.0-32.0 kg
- per segment (glass type 4-11)
 reflex / transparent: 7.9-15.6/10.4-19.8 kg
Depending on execution weight can vary.

Design Data

Design pressure/-temperature see derating
75x30, 80x40, 100x40,
120x40, 140x40: data sheet BG00R2-00RD

Further Data

Connection gauge valve - body: see 700.VAR
Process connection: see 700.VAR
Vent: see 700.VAR
Drain: see 700.VAR

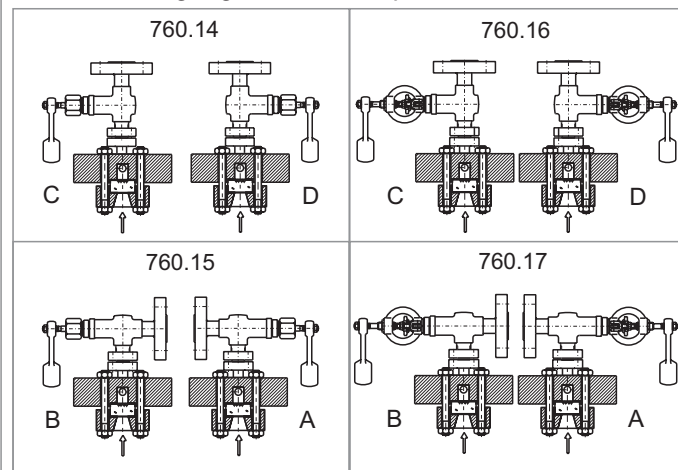
Accessories

Glass protection etc.: see accessories
Frosts protection: see accessories
Illumination: see accessories
Scale: see accessories
Heating: see accessories

CS (= carbon steel) and SS (= stainless steel type 316SS) are materials suitable for Pressure Vessels according to EN or ASME.

Subject to alterations

Orientation of gauge valve and operation



Ordering no.

7 0 0 5 6 X X X X X X X X - X X - X X X X X X X X X X - X X X X X		see 700.VAR	ME [mm]
bridging	without	0	results from ME
	with	1	X spec. glass types
glass window	Reflex (DIN 7081)	1	X X nos of segments
	Transparent (DIN 7081)	2	DIN-bolts, -nuts
			A ANSI-bolts, -nuts
gauge valve	760.14	1 4	
	760.15	1 5	X 17, A - D, depends on design pressure
	760.16	1 6	see data sheet 760.14/15/16/17
	760.17	1 7	
			DIN/ASME
			gauge body
			orientation
			gauge valve

PHÖNiX

Messtechnik GmbH
Salzschlierer Straße 13
D-60386 Frankfurt/M.
Tel. +49/69/41 67 42 - 20
Fax +49/69/41 67 42 - 29
sales@phoenix-mt.com
www.phoenix-mt.com

PHÖNiX