

www.phoenix-mt.com
PHÖNIX Messtechnik GmbH

PHÖNIX

Sight glass level gauge CL150 to 600

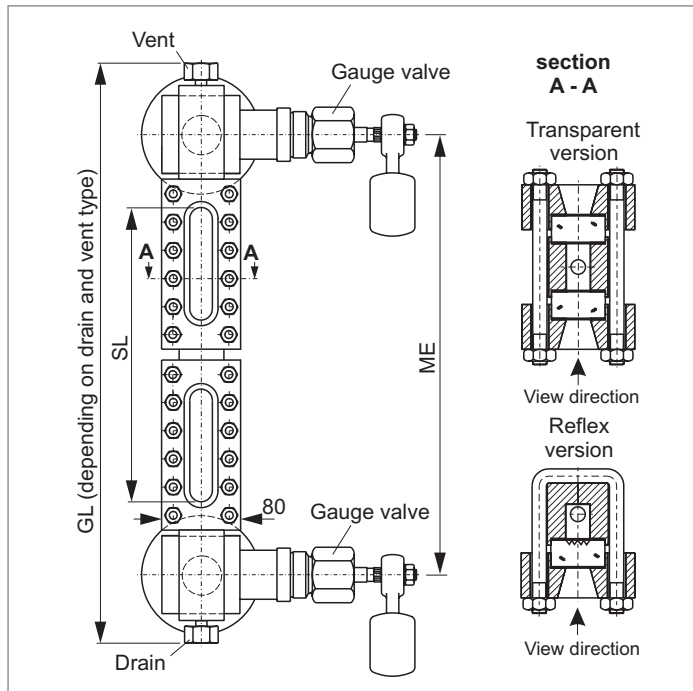
Light execution
Reflex, Transparent
Connection side-side fixed
Connection gauge valve to gauge chamber: flange
Quick closing

Product group **700**

Type **10**

Sheet: 13 Revision: 0

Date: 02/05



Field of Application

Direct reading liquid level indicator for general applications up to CL600 (depends on glass type). Increased safety with ball check valves.

General Data

Visible length SL
Reflex / transparent: ≤ME / ME-130* mm
Body: 40 x 40, Ø40 (for special materials)
Connection gauge valve - body: flange
Gauge valve types: s. data sheet 760.14/15/16/17
Actuation: quick closing
Material glass plates acc. to DIN 7081: Borosilicate
Material media wetted parts: CS, SS
Depending on delivery situation material can vary.
Types with special materials e. g. Hastelloy, Monel etc. are available.

Weight

- basic weight (glass type 4-9)
reflex / transparent: 17.0-19.3 kg / 20.0-24.0 kg
- per segment (glass type 4-9)
reflex / transparent: 6.8-11.5 kg / 8.2-12.8 kg
Depending on execution weight can vary.

Design Data

Design pressure/-temperature see derating
- D40, reflex: data sheet BG00R0
- 40 x 40, reflex, transparent: data sheet BG00R1

Further Data

Connection gauge valve - body: see 700.VAR
Process connection: see 700.VAR
Vent: see 700.VAR
Drain: see 700.VAR

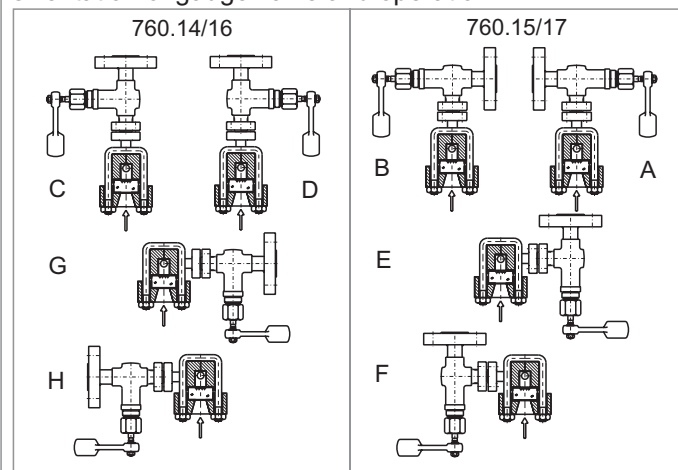
Accessories

Glass protection etc.: see accessories
Frosts protection: see accessories
Illumination: see accessories
Scale: see accessories
Heating: see accessories

CS (= carbon steel) and SS (= stainless steel type 316SS) are materials suitable for Pressure Vessels according to EN or ASME.

Subject to alterations

Orientation of gauge valve and operation



Ordering no.

7 0 0 1 0 X X X X X X X X - X X - X X X X X X X X X X - X X X X X		see 700.VAR	ME [mm]
bridging	without	0	results from SL
	with	1	X spec. glass types
glass window	Reflex (DIN 7081)	1	X X nos of segments
	Transparent (DIN 7081)	2	
gauge valve	760.14	1 4	0 D40 (for special materials)
	760.15	1 5	1 40 x 40 DIN 7081
	760.16	1 6	X see above and data sheet 760.14/15/16/17
	760.17	1 7	

PHÖNIX

Messtechnik GmbH
Salzschlirfer Straße 13
D-60386 Frankfurt/M.
Tel. +49/69/41 67 42 -20
Fax +49/69/41 67 42 - 29
sales@phoenix-mt.com
www.phoenix-mt.com

PHÖNIX