

# Sight glass - Tubular type

with flanged connection acc. to DIN



Bauform 20

## Application:

Sightglass - Tubular type with flanges on both sides, to use in either horizontal or vertical pipe lines for optical control of fluids and gasses.

## Operating conditions:

Connection: Flanges PN 10 / 16  
 Pressure: up to DN 100 - 6 bar max  
 from DN 125 - 4 bar max  
 Temperature: 200°C max.

## Materials:

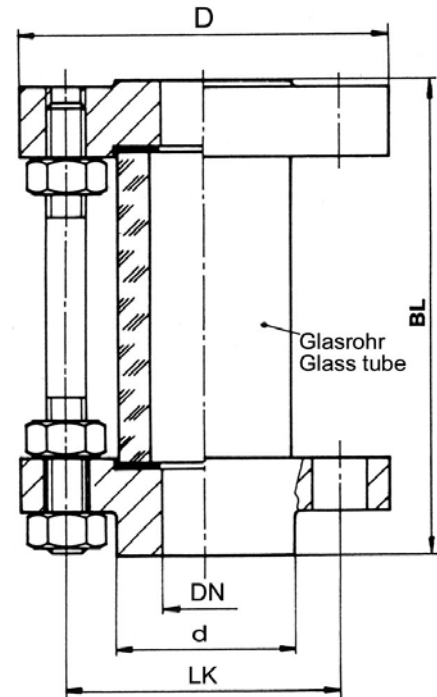
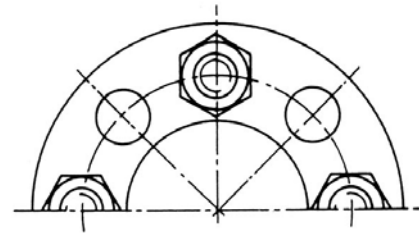
Flanges: WN 1.4571 | Steel H II  
 Screws: A4 - 70 | Steel  
 Glass tube: Borosilicate glass (DURAN)  
 Gaskets: Viton or PTFE

## Spezial designs:

Protection jacket of acrylic glass  
 ANSI - Flanges  
 Extra length

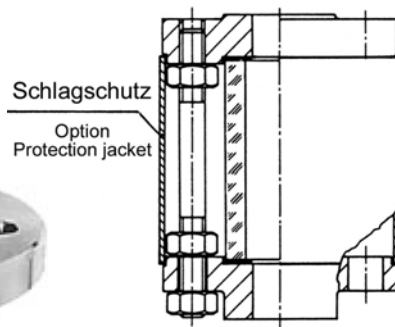
## Example for an order:

Sight Glass - Tubular Type Bauform 20  
 WN 1.4571, Gaskets PTFE  
 DN 50, PN 16; 6 bar max.



## Mounting instructions:

Sight glass tubular type must be mounted without tension by tube, vibrations and pressure pushes.



## Dimensions:

DN	D	d	BL	Screws	LK
15	95	45	200	4	65
20	105	58	200	4	75
25	115	68	200	4	85
32	140	78	200	4	100
40	150	88	200	4	110
50	165	102	200	4	125
65	185	122	200	4	145
80	200	138	200	8	160
100	220	158	200	8	180
125	250	188	200	8	210
150	285	212	200	8	240
200	340	242	200	8	295

Modifications reserved



AVEMAR cz s.r.o., Lihovarská 10, 716 03 Ostrava - Radvanice  
 Tel.: +420 596 232 996, 596 232 997, Fax: +420 596 232 998  
 E-mail: avemar@avemar.cz, web: www.avemar.cz