

Sight Flow Indicators (straight line)

with *butt weld ends* (S)



Bauform 112-S

Application:

Sight Flow Indicators are used for optical control and the observation of filling and current in pipelines. Without restfluid in the body in horizontal installation.

**Without rest fluid
in the body**

Operating conditions:

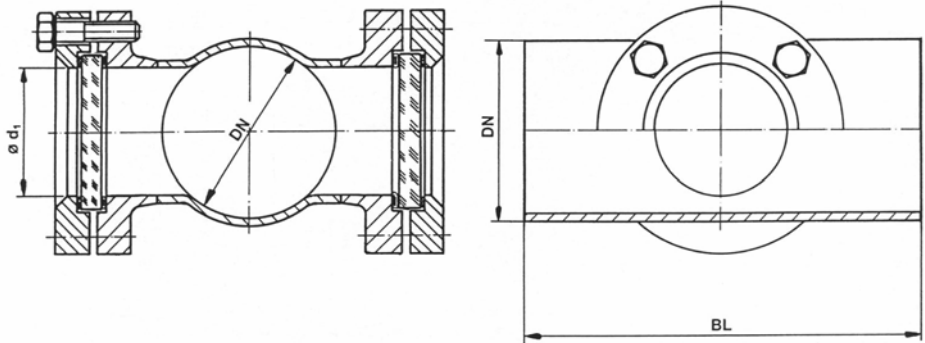
Working pressure : 16 bar

Standard Materials:

Body : WN 1.4571 or 1.4404
 Covers : Stainless steel
 Screws : A4-70
 Sight glasses : Borosilicate glass acc. to DIN 7080; (max. 280°C)
 Soda lime glass acc. to DIN 8902; (max 150°C)
 Gasket : Graphite (other materials are available on request)

Options:

Flanges in DIN or ANSI
 Light-fitting
 Body in steel



Ordering example:

Sight flow indicators
 with butt weld ends
 Bauform 112-S
 Body: WN 1.4571;
 Borosilicate glass
 DN 100 / 114,3



Dimensions:

DN / Da	BL	ø d ₁	Glass Ød x S
25 / 33,7	160	23	45 x 10
40 / 48,3	200	39	63 x 10
50 / 60,3	230	44	63 x 10
80 / 88,9	310	64	80 x 12
100 / 114,3	350	80	100 x 15
125 / 139,7	400	80	100 x 15
150 / 168,3	480	100	125 x 20
200 / 219,1	600	125	150 x 25
250 / 273,0	730	150	175 x 25
300 / 323,9	850	150	175 x 25
350 / 355,6	980	150	175 x 25

Modifications reserved



AVEMAR cz s.r.o., Lihovarská 10, 716 03 Ostrava - Radvanice
 Tel.: +420 596 232 996, 596 232 997, Fax: +420 596 232 998
 E-mail: avemar@avemar.cz, web: www.avemar.cz