

Reflex level gauge LG40

Sight openings superposed, with intermediate flange

Application and function

The reflex level gauge is a direct level gauge which can be used for steam boilers and containers. In the sight opening, the water level is indicated dark and the steam light.

The product corresponds to the PED directive 97/23/EEC art. 3 par. 3 SEP. (Sound Engineering Practice).

Applied rules as per TRD/AD2000 or ASME Boilers.

Technical basic equipment

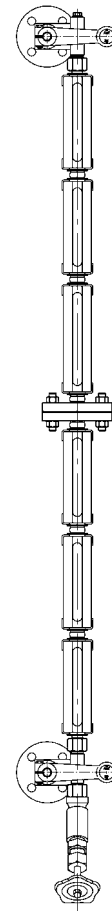
- Body material carbon steel
- Sight lengths see table
- With intermediate flange for support
- As left sided (mapped) or right sided model
- With drain valve and ventilation plug
- Shutoff valves type A110, A120 or A210
- Drain valve type AV500

Available (optional) versions

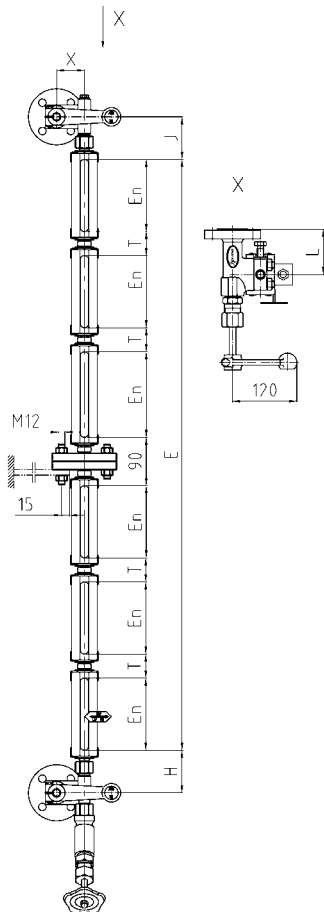
- Body material and valves stainless steel
- Other drain valves on request

Technical data

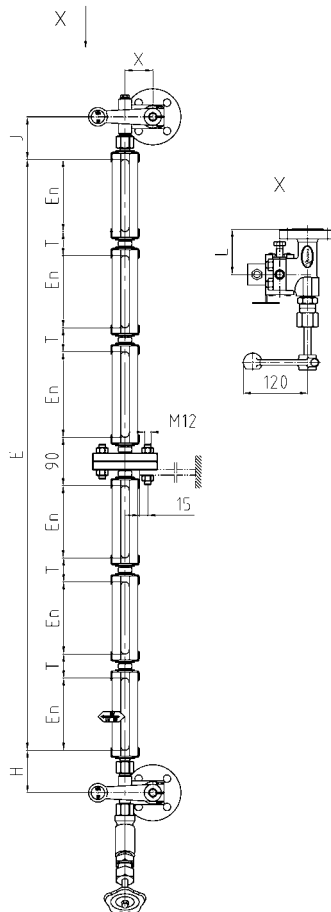
All. pressure	PS	[bar]	32	
All. temperature	TS	[° C]	239	
Drain valve	Type	AV500	Data sheet	D-09-D-16358-0
Shutoff valve	Type	A110	Data sheet	D-09-D-16353-0
	Type	A110		D-09-D-16353-0
	Type	A120		D-09-D-16354-0
	Type	A210		D-09-D-16356-0



Left sided model



Right sided model



One sight opening	Size	5	6	7	8	9	10
	Sight length E_n	200	230	260	300	320	350
Sight openings superposed E	5ü					1825	1975
	6ü			1830	2070	2190	2370
	7ü	1715	1925	2135	2415	2555	2765
	8ü	1960	2200	2440	2760	2920	3160
	9ü	2205	2475	2745	3105		
	10ü	2450	2750	3050	3450		
Dimension	H/J_{min} [mm]	55					
	H/J_{max} [mm]	On request					
	X [mm]	52					
	T [mm]	45					





Allowable pressure PS [bar]	Valve	Flange	Welding end	X	L	L1
32	A110			52 mm	85 mm	Handwheel 140 mm
32	A110			52 mm	85 mm	Handlever 155 mm
32	A120	DN20		52 mm	140 mm	175 mm
32	A120	DN25		52 mm	119 mm	175 mm
32	A120		x	52 mm	130 mm	175 mm
32	A210	DN20		52 mm	170 mm	175 mm
32	A210	DN25		52 mm	-	175 mm
32	A210		x	52 mm	160 mm	175 mm

