

Thermostatic bimetal steam traps type BF24/BF25

Application and function

The thermostatic bimetal steam traps are generally used to drain unregulated heating processes like superheated steam piping or steam traces.

The bending of the bimetal changes by temperature differences. Thus the valve is opened and closed.

Technical basic equipment

- Steam trap with bimetal column
- Strainer
- Small length with integrated sight glasses
- Excellent drainage and exhaust characteristics in the entire working area
- Resistant against water hammer and superheated steam
- High expectancy and reliability

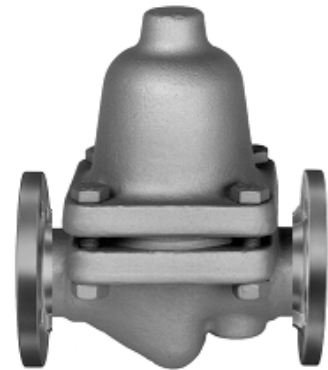
Available (optional) versions

- Undercooling optional 6K, 12K (Standard) or 25K

Technical data

Type		BF24	BF25
Nominal diameter	DN	15/20/25	
All. pressure	PS [bar]	0-22	
All. temperature	TS [° C]	400 (DIN 2401)	300 (DIN 2401)
Dimension	[mm]	DIN EN 26554	
Connection		Flanges as per DIN 2635	
Housing		C22.8 (1.0460)	
Cap material		C22.8 (1.0460)	
Inner parts		Corrosion and acid resistant CrNi-steel	
Bimetal		Bimetal „RGR“ plated with stainless steel	
Undercooling		12K (6K, 25K)	

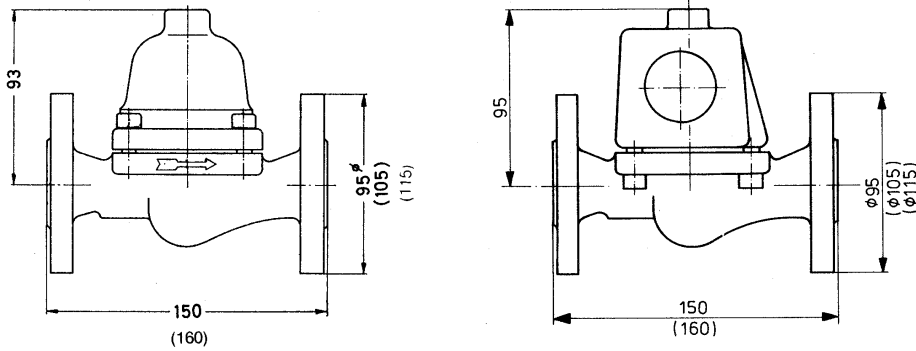
BF24



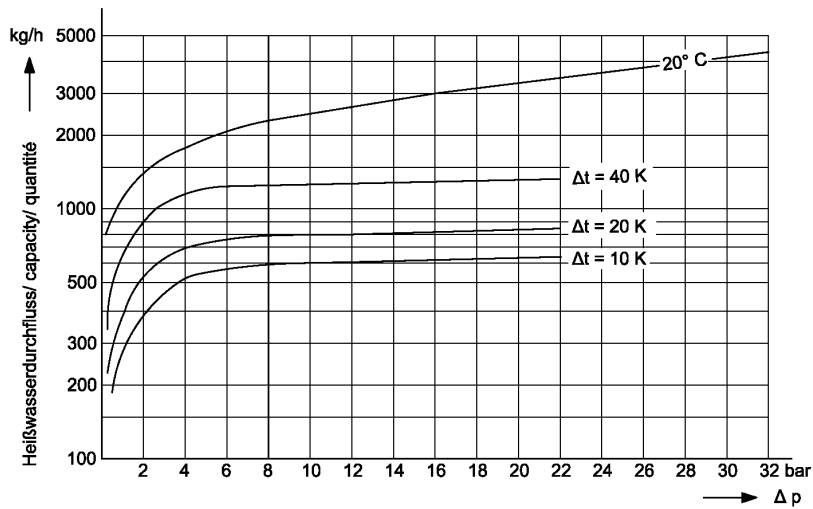
BF25



Dimensions



Capacity



Type	Article no	DN	PS [bar]	Spare parts	
				Bimetal column with sealings	Sight glasses with sealings
				Article no.	Article no.
BF24	K-12-10-A1	15	0-22	15-02758	---
	K-12-10-A2	20			
	K-12-10-A3	25			
BF25	K-12-10-B1	15		15-02767	
	K-12-10-B2	20			
	K-12-10-B3	25			

