

## Thermostatic bimetal steam traps type BF24/BF25

### Application and function

The thermostatic bimetal steam traps are generally used to drain unregulated heating processes like superheated steam piping or steam traces.

The bending of the bimetal changes by temperature differences. Thus the valve is opened and closed.

### Technical basic equipment

- Steam trap with bimetal column
- Strainer
- Small length with integrated sight glasses
- Excellent drainage and exhaust characteristics in the entire working area
- Resistant against water hammer and superheated steam
- High expectancy and reliability

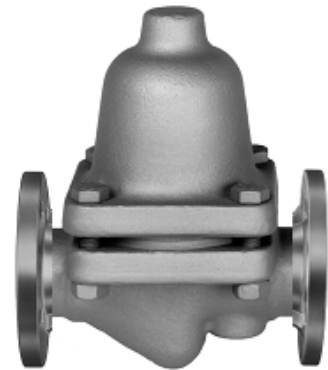
### Available (optional) versions

- Undercooling optional 6K, 12K (Standard) or 25K

### Technical data

| Type             |          | BF24                                      | BF25           |
|------------------|----------|-------------------------------------------|----------------|
| Nominal diameter | DN       | 15/20/25                                  |                |
| All. pressure    | PS [bar] | 0-22                                      |                |
| All. temperature | TS [° C] | 400 (DIN 2401)                            | 300 (DIN 2401) |
| Dimension        | [mm]     | DIN EN 26554                              |                |
| Connection       |          | Flanges as per DIN 2635                   |                |
| Housing          |          | C22.8 (1.0460)                            |                |
| Cap material     |          | C22.8 (1.0460)                            |                |
| Inner parts      |          | Corrosion and acid resistant CrNi-steel   |                |
| Bimetal          |          | Bimetal „RGR“ plated with stainless steel |                |
| Undercooling     |          | 12K (6K, 25K)                             |                |

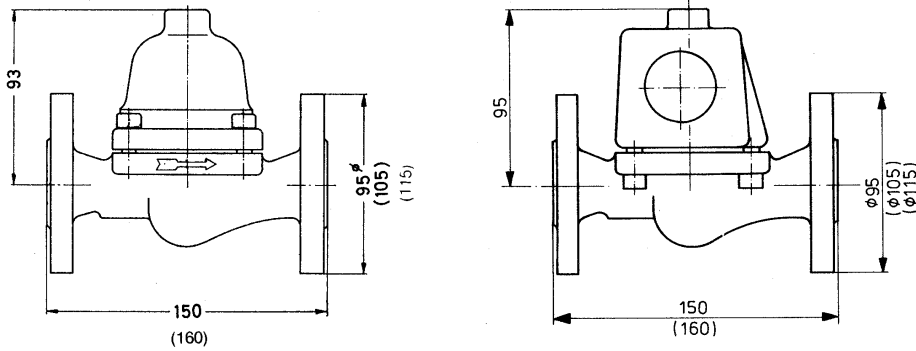
BF24



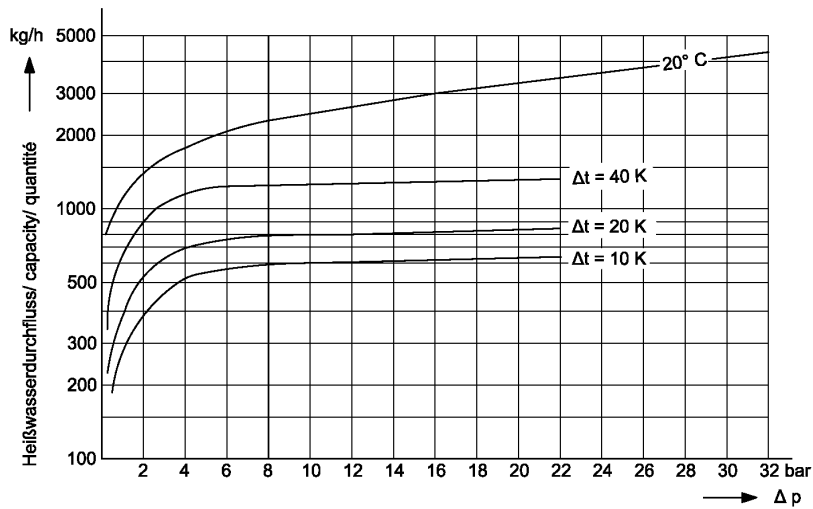
BF25



### Dimensions



### Capacity



| Type | Article no | DN | PS<br>[bar] | Spare parts                  |                             |
|------|------------|----|-------------|------------------------------|-----------------------------|
|      |            |    |             | Bimetal column with sealings | Sight glasses with sealings |
|      |            |    |             | Article no.                  | Article no.                 |
| BF24 | K-12-10-A1 | 15 | 0-22        | 15-02758                     | ---                         |
|      | K-12-10-A2 | 20 |             |                              |                             |
|      | K-12-10-A3 | 25 |             |                              |                             |
| BF25 | K-12-10-B1 | 15 |             | 15-02767                     |                             |
|      | K-12-10-B2 | 20 |             |                              |                             |
|      | K-12-10-B3 | 25 |             |                              |                             |

