

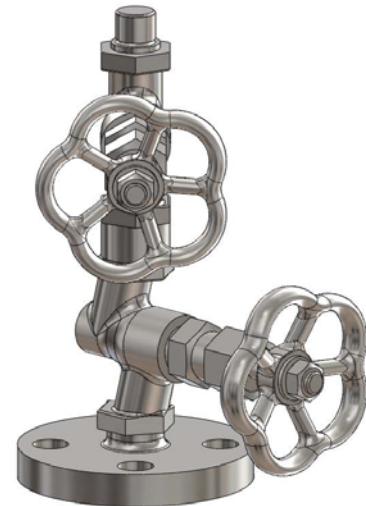
Double-drain valve type AV56x, AV57x

Application and function

The drain valve is used to drain instruments or to drain fillings of instruments. The area of application comprises with the entire product range of level gauges and float switches.

Technical basic equipment

- Inlet: depending on type (see table)
- Outlet: depending on type (see table)
- Body material carbon steel as per DIN or ASME,
- Inner parts of valve: stainless steel,
- Handwheel carbon steel (up to PS = 32 bar)
resp. aluminium up to PS = 200 bar



Technical data

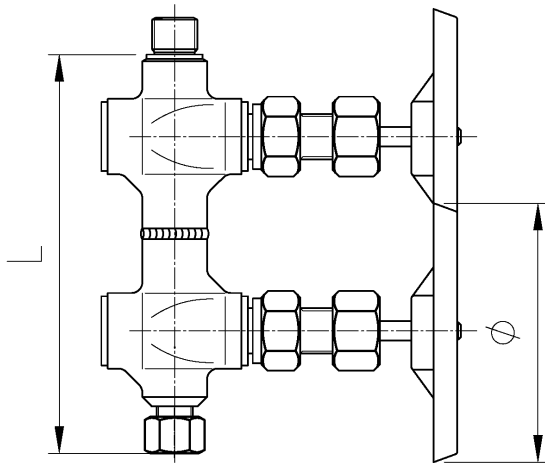
		AV56x		AV57x				
Allowable pressure	PS [bar]	20	32	50	80	100	160	200
Allowable temperature	TS [° C]	215	239	265	296	312	348	367
Handwheel	∅ [mm]	80		110				
Dimension	L [mm]	ca. 140-160 (depending on version)						

Type	Inlet	Outlet	L = [mm]
AV560	G ½	Cutting ring connection	appr. 260
AV561	Welding end	Welding end	
AV570	G ½	Cutting ring connection	
AV571	G ½	Welding end	
AV572	G ½	Flange	
AV575	G ½	Socket welding 1" class 6000	
AV576	G ½	Socket welding 1" class 3000	

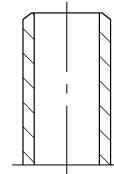


Inlet G ½

Outlet cutting ring connection

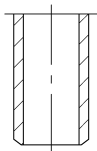


Inlet welding end

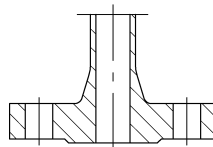


Welding end DIN 3239
Butt welding end ASME

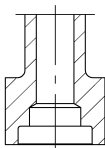
Outlet



Welding end DIN 3239
Butt welding end ASME B16.25



Flange as per DIN or ASME B16.5



Socket welding
SW ASME B16.11