

## Drain valve type AV540, AV550

### Application and function

The drain valve is used to drain instruments or to drain fillings of instruments. The area of application comprises with the entire product range of level gauges and float switches.

### Technical basic equipment

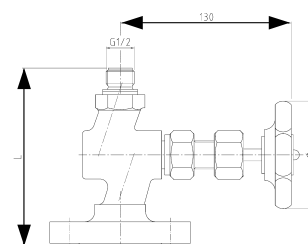
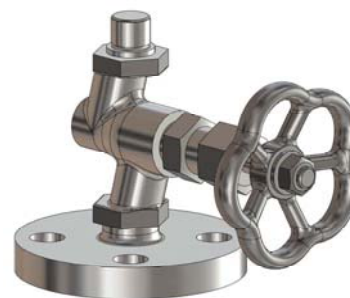
- Inlet: male thread G ½
- Outlet: flange
- Body material carbon steel as per DIN or ASME,
- Inner parts of valve: stainless steel,
- Handwheel carbon steel (up to PS = 32 bar)  
resp. aluminium up to PS = 200 bar

### Available (optional) versions

- Other versions (inlet-, outlet) on request

### Technical data

		AV540		AV550				
Allowable pressure	PS [bar]	20	32	50	80	100	160	200
Allowable temperature	TS [° C]	215	239	265	296	312	348	367
Handwheel	∅ [mm]	80		110				
Dimension	L [mm]	ca. 140-160 (depending on version)						



Welding end DIN 3239  
Butt welding end ASME B16.25



Socket welding  
SW ASME B16.11