

## Shutoff valve type A240

### Application and function

The area of application comprises the entire product range of transparent and bicolour level gauges. They are used to shut off the level gauge.

### Technical basic equipment

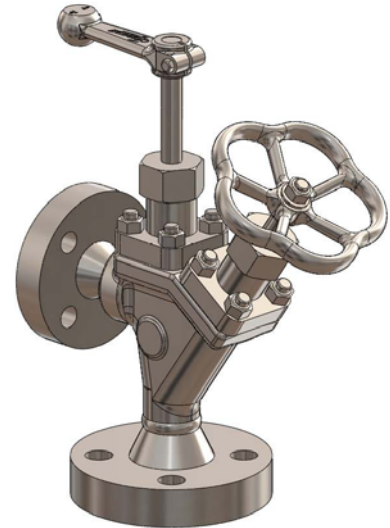
- Body material carbon steel, material as per DIN or ASME
- Inner parts of valve stainless steel
- Handwheel and handlever aluminium
- Process connection PS = 100 – 200 bar: DN25
- Self-closing ball for automatic shutoff in case of glass or mica break
- Version with backseat to release gland packing

### Available (optional) versions

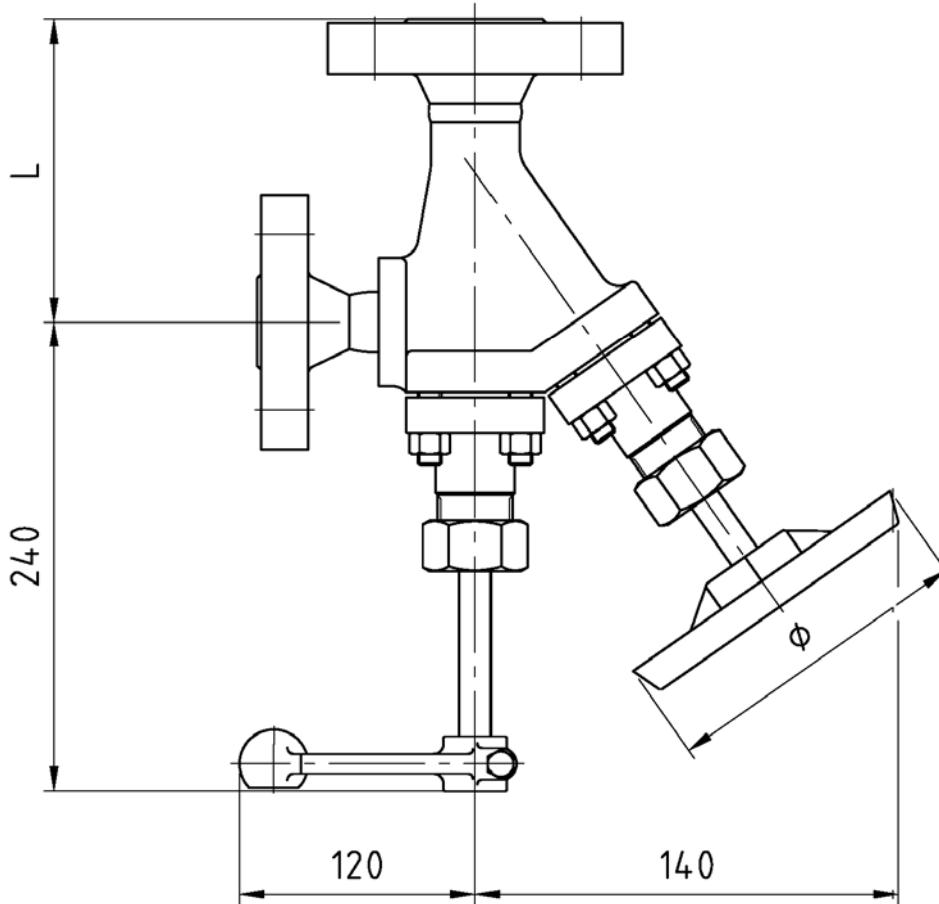
- Quick closing spindle
- Other process connections as per DIN or ASME, butt welding end and socket welding

### Technical data

|                       |    |       |     |     |     |
|-----------------------|----|-------|-----|-----|-----|
| Allowable pressure    | PS | [bar] | 100 | 160 | 200 |
| Allowable temperature | TS | [° C] | 312 | 348 | 367 |
| Handwheel             | ∅  | [mm]  | 150 |     |     |

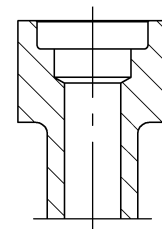
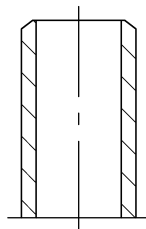


A240 with flange as per DIN



Welding end

Socket Welding



Welding end DIN 3239  
Butt welding end ASME B16.25

Socket welding  
SW ASME B16.11

| allowable pressure [bar] | Flange          | L [mm] | Welding end   | L [mm] |
|--------------------------|-----------------|--------|---------------|--------|
| 100                      | DN25 DIN 2638-E | 145    | DN25 DIN 3239 | 150    |
| 160                      | DN25 DIN 2628-E | 155    | DN25 DIN 3239 | 150    |
| 200                      | DN25 DIN 2629-E | 170    | DN25 DIN 3239 | 150    |