

## Transparent liquid level gauge light spot glass or glass-mica one sight opening, swivel connection

### 1. Application

As direct liquid level gauge according to TRD or ASME.

PN	40	63	100
Max. allowable working pressure	PB = 32	50	80 bar
Max. allowable working temperature	TB = 239	265	296 °C

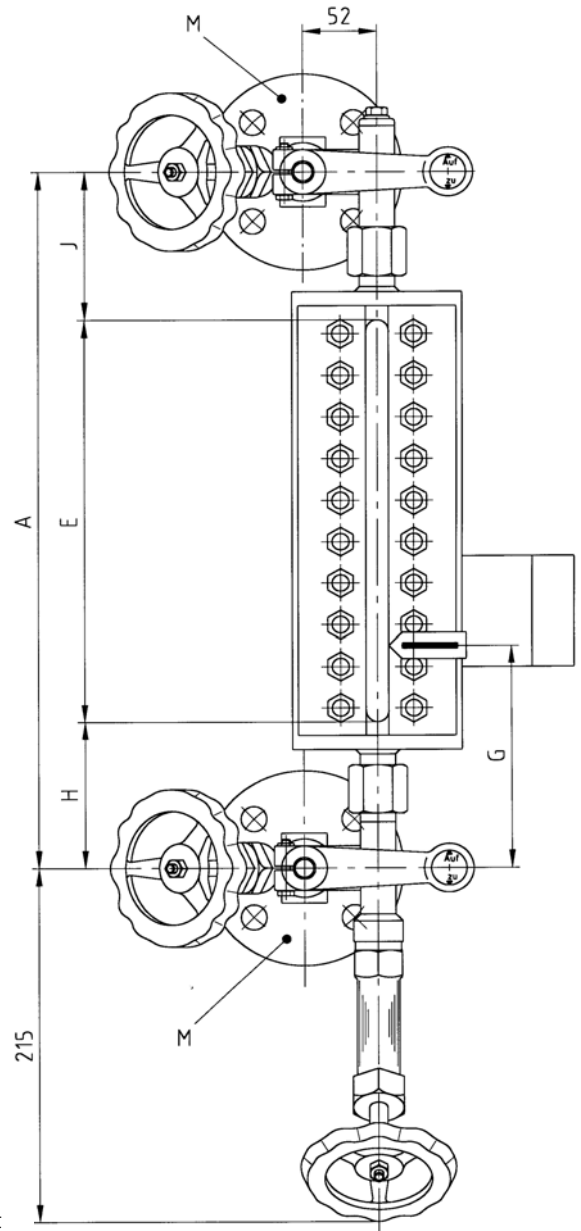
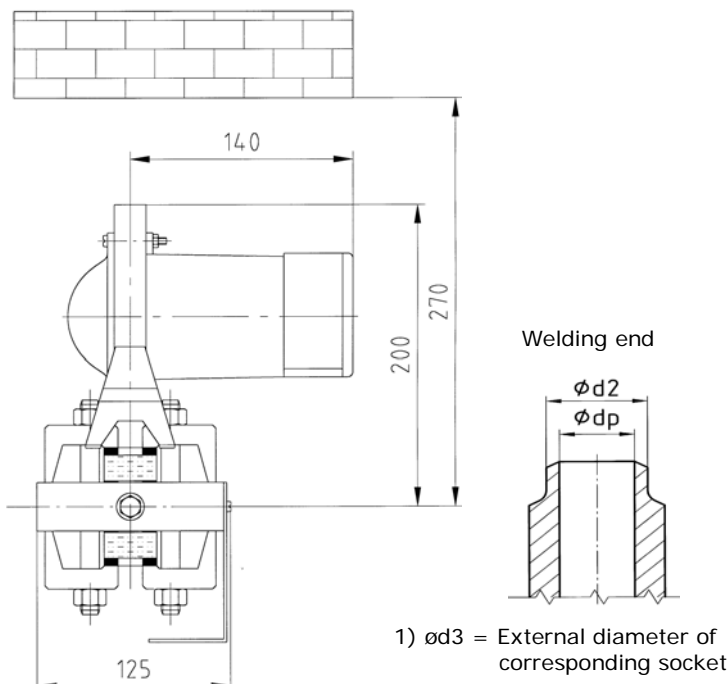
### 2. Version

- Possible sight length E, see summary 3-Ü 001
- As left-hand (see picture) or right-hand model (please indicate in case of order)
- Light spot glass (only up to PN 40)
- Light spot glass - mica
- Shutoff valve see leaflet 9-V 003 bis 9-V 009
- Drain valve see leaflet 9-V 502
- Illumination device see leaflet 3-AF 901, 3-AF 910 or 3-AF 920

Can be delivered on demand:

- Illuminated low-level-mark, according to IP 32

Version glass – mica with illumination device IP 32



Version	Size	Dimension A [mm]	Dimension E [mm]	Dimension H [mm]	Process connection M		Material
					Flange	Flange	
PN		Dimension J [mm]	Dimension G [mm]		PN	DN	
PB bar					Contact faces	Form	
TB °C							
Shutoff valve	Type	Leaflet			Process connection M		Weight kg
Drain valve	Type				Welding end		
Illumination device	IP				PN	DN	
Spare part list					$\phi dp$	$\phi d2$	$\phi d3$ <sup>1)</sup>
Mounting and operating instruction							
Jgema-Project no:		Equipment no:					

## Transparent liquid level gauge light spot glass or glass-mica one sight opening, fixed

### 1. Application

As direct liquid level gauge according to TRD or ASME.

PN	40	63	100
Max. allowable working pressure	PB = 32	50	80 bar
Max. allowable working temperature	TB = 239	265	296 °C

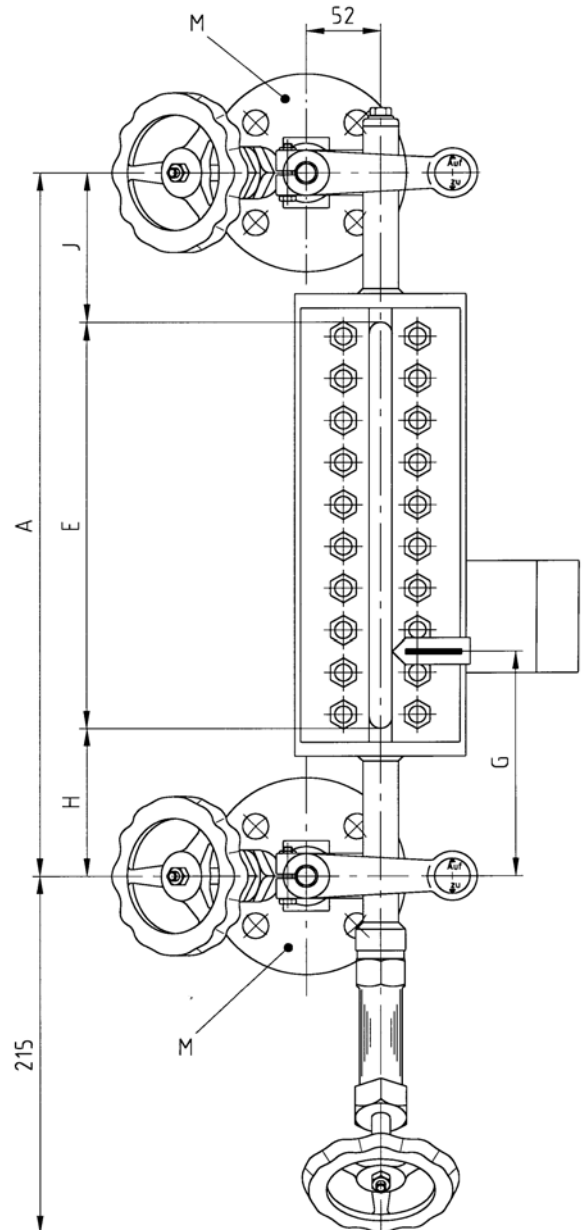
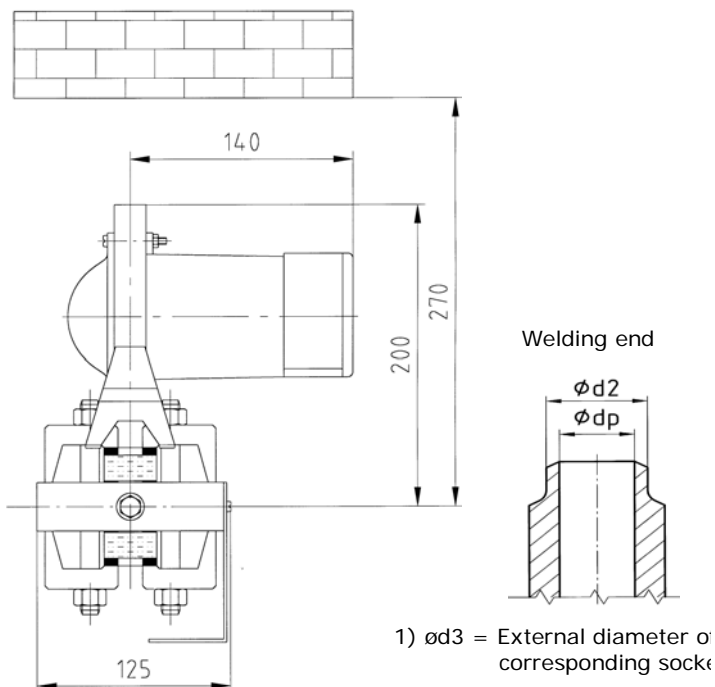
### 2. Version

- Possible sight length E, see summary 3-Ü 001
- As left-hand (see picture) or right-hand model (please indicate in case of order)
- Light spot glass (only up to PN 40)
- Light spot glass - mica
- Shutoff valve see leaflet 9-V 003 bis 9-V 009
- Drain valve see leaflet 9-V 502
- Illumination device see leaflet 3-AF 901, 3-AF 910 or 3-AF 920

Can be delivered on demand:

- Illuminated low-level-mark, according to IP 32

Version glass – mica with illumination device IP 32



Version	Size	Dimension A [mm]	Dimension E [mm]	Dimension H [mm]	Process connection M		Material
					Flange		
PN		Dimension J [mm]	Dimension G [mm]		PN	DN	
PB bar					Contact faces	Form	
TB °C							
Shutoff valve	Type	Leaflet			Process connection M		Weight kg
Drain valve	Type				Welding end		
Illumination device	IP				PN	DN	
Spare part list					$\phi dp$	$\phi d2$	$\phi d3$ <sup>1)</sup>
Mounting and operating instruction							
Jgema-Project no:		Equipment no:					

## Transparent liquid level gauge light spot glass or glass-mica one sight opening, lateral connection

### 1. Application

As direct liquid level gauge according to TRD. or ASME

PN 40 63 100  
 Max. allowable working pressure PB = 32 50 80 bar  
 Max. allowable working temperature TB = 239 265 296 °C

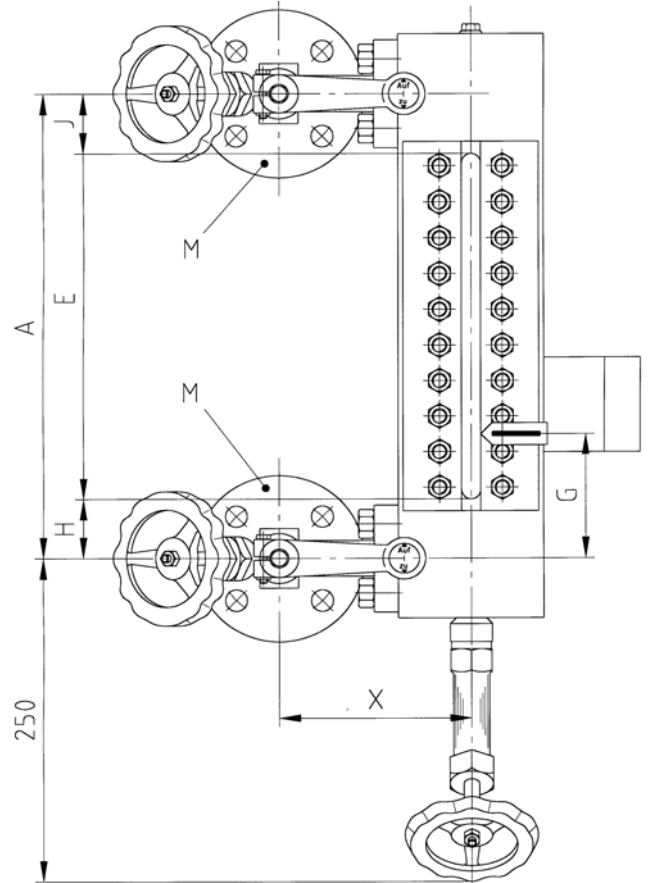
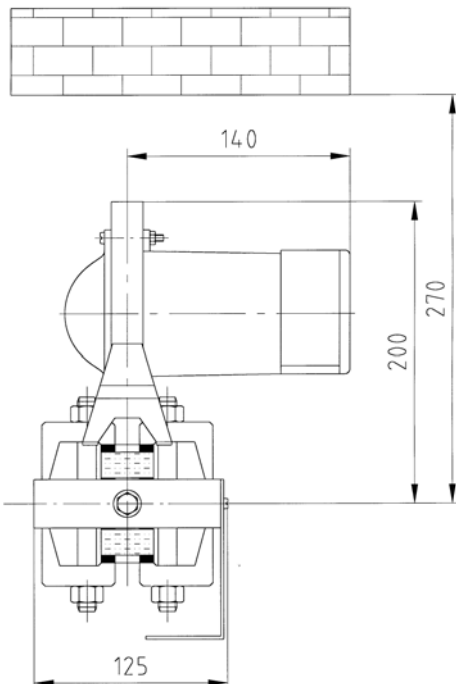
### 2. Version

- Possible sight length E, see summary 3-Ü 001
- As left-hand (see picture) or right-hand model (please indicate in case of order)
- Light spot glass (only up to PN 40)
- Light spot glass - mica
- Shutoff valve see leaflet 9-V 003 bis 9-V 009
- Drain valve see leaflet 9-V 502
- Illumination device see leaflet 3-AF 901, 3-AF 910 or 3-AF 920

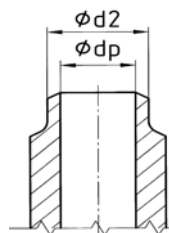
Can be delivered on demand:

- Illuminated low-level-mark, according to IP 32

Version glass – mica with illumination device IP 32



Welding end



1)  $\phi d3$  = External diameter of corresponding socket

Version	Size	Dimension A [mm]	Dimension E [mm]	Dimension H [mm]	Process connection M		Material
					Flange	DN	
PN		Dimension J [mm]	Dimension G [mm]	Dimension X [mm]	PN	DN	
PB bar					Contact faces	Form	
TB °C							
Shutoff valve	Type	Leaflet	Process connection M			Weight kg	
Drain valve	Type		Welding end				
Illumination device	IP		PN	DN			
Spare part list			$\phi dp$	$\phi d2$	$\phi d3$ <sup>1)</sup>		
Mounting and operating instruction							
Jgema-Project no:		Equipment no:					

## Transparent liquid level gauge light spot glass or glass-mica sight openings superposed

### 1. Application

As direct liquid level gauge according to TRD or ASME.

PN	40	63	100
Max. allowable working pressure	PB = 32	50	80 bar
Max. allowable working temperature	TB = 239	265	296 °C

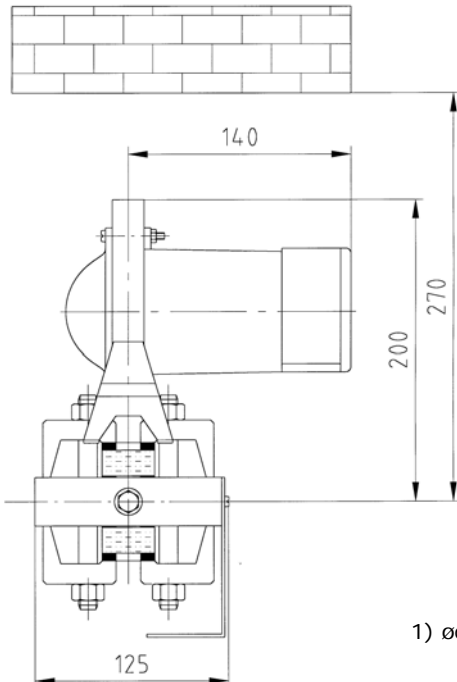
### 2. Version

- Possible sight length E, see summary 3-Ü 001
- As left-hand (see picture) or right-hand model (please indicate in case of order)
- Light spot glass (only up to PN 40)
- Light spot glass - mica
- Shutoff valve see leaflet 9-V 003 bis 9-V 009
- Drain valve see leaflet 9-V 502
- Illumination device see leaflet 3-AF 901, 3-AF 910 or 3-AF 920

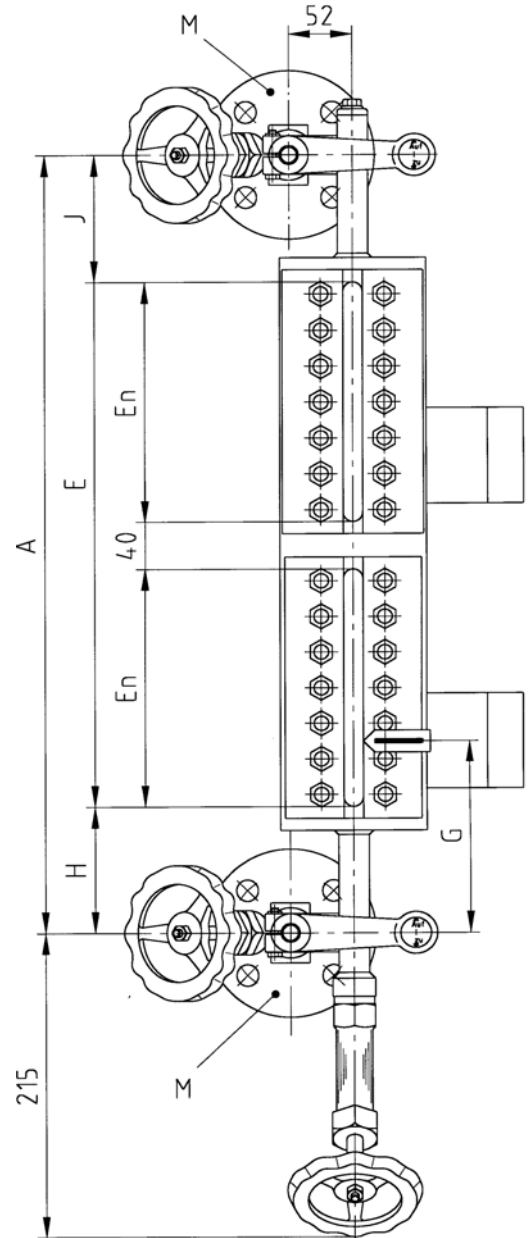
Can be delivered on demand:

- Illuminated low-level-mark, according to IP 32

Version glass – mica with illumination device IP 32



1)  $\phi d3$  = External diameter of corresponding socket



Version	Size	Dimension A [mm]	Dimension E [mm]	Dimension En [mm]	Process connection M Flange		Material
					PN	DN	
PN		Dimension H [mm]	Dimension J [mm]	Dimension G [mm]	Contact faces	Form	
PB bar							
TB °C							
Shutoff valve	Type	Leaflet	Process connection M Welding end			Weight kg	
Drain valve	Type						
Illumination device	IP						
Spare part list			$\phi dp$	$\phi d2$	$\phi d3$ <sup>1)</sup>		
Mounting and operating instruction							
Jgema-Project no:		Equipment no:					

## Transparent liquid level gauge light spot glass or glass-mica multiple section, vertical arrangement, lateral connection

### 1. Application

As direct liquid level gauge according to TRD or ASME.

PN	40	63	100
Max. allowable working pressure	PB= 32	50	80 bar
Max. allowable working temperature	TB=239	265	296 °C

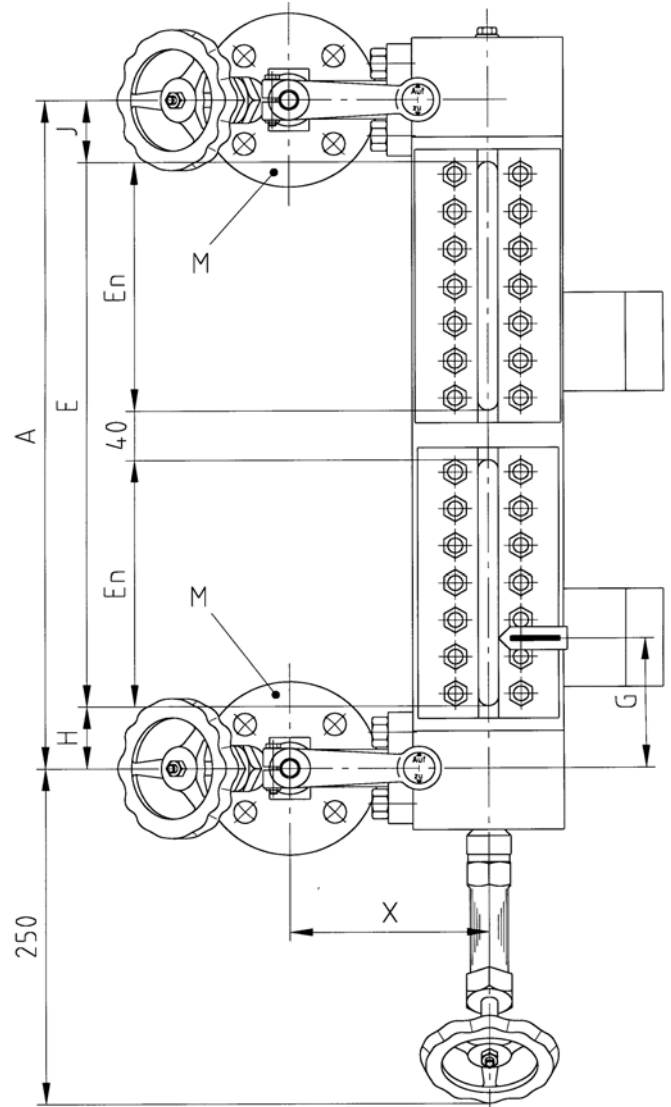
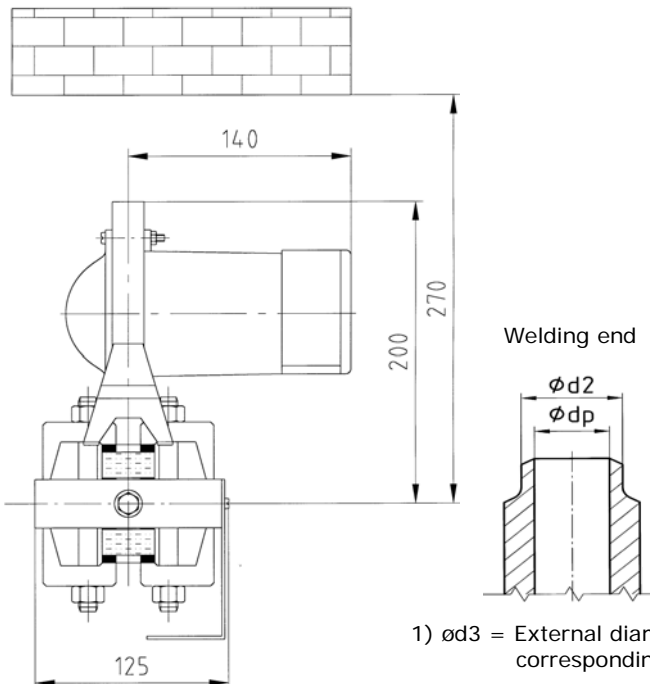
### 2. Version

- Possible sight length E, see summary 3-Ü 001
- As left-hand (see picture) or right-hand model (please indicate in case of order)
- Light spot glass (only up to PN 40)
- Light spot glass - mica
- Shutoff valve see leaflet 9-V 003 bis 9-V 009
- Drain valve see leaflet 9-V 502
- Illumination device see leaflet 3-AF 901, 3-AF 910 or 3-AF 920

Can be delivered on demand:

- Illuminated low-level-mark, according to IP 32

Version glass – mica with illumination device IP 32



Version	Size	Dimension A [mm]	Dimension E [mm]	Dimension En [mm]	Process connection M Flange		Material
					PN	DN	
PN	Dimension H [mm]	Dimension J [mm]	Dimension G [mm]	Dimension X [mm]	Contact faces		Form
PB bar							
TB °C							
Shutoff valve	Type	Leaflet	Process connection M			Weight kg	
Drain valve	Type		Welding end				
Illumination device	IP		PN	DN			
Spare part list			$\phi dp$	$\phi d2$	$\phi d3$ <sup>1)</sup>		
Mounting and operating instruction							
Jgema-Project no:		Equipment no:					

## Transparent liquid level gauge light spot glass or glass-mica sight openings staggered, even number

### 1. Application

As direct liquid level gauge according to TRD or ASME.

PN 40 63 100  
 Max. allowable working pressure PB = 32 50 80 bar  
 Max. allowable working temperature TB = 239 265 296 °C

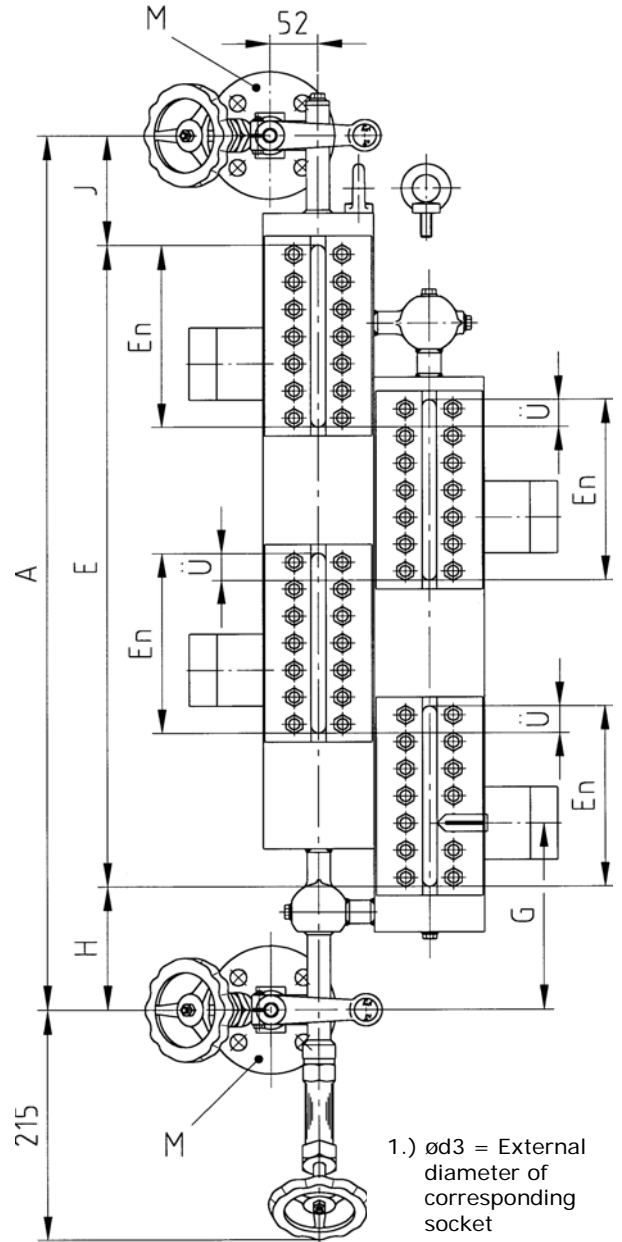
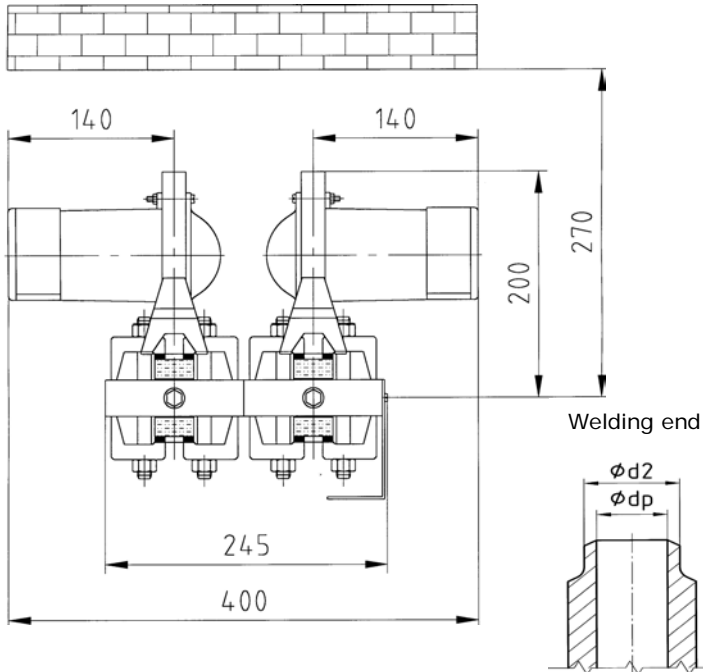
### 2. Version

- Possible sight length E, see summary 3-Ü 001
- As left-hand (see picture) or right-hand model (please indicate in case of order)
- Light spot glass (only up to PN 40)
- Light spot glass - mica
- Shutoff valve see leaflet 9-V 003 bis 9-V 009
- Drain valve see leaflet 9-V 502
- Illumination device see leaflet 3-AF 901, 3-AF 910 or 3-AF 920

Can be delivered on demand:

- Illuminated low-level-mark, according to IP 32

Version glass – mica with illumination device IP 32



Version	Size	Dimension A [mm]	Dimension E [mm]	Dimension En [mm]	Process connection M		Material
					Flange	Flange	
PN	Dimension H [mm]	Dimension J [mm]	Dimension Ü [mm]	Dimension G [mm]	PN	DN	
PB bar					Contact faces	Form	
TB °C							
Shutoff valve	Type	Leaflet			Process connection M		Weight kg
Drain valve	Type				Welding end		
Illumination device	IP				PN	DN	
Spare part list					$\phi dp$	$\phi d2$	$\phi d3$ <sup>1)</sup>
Mounting and operating instruction							
Jgema-Project no:		Equipment no:					

## Transparent liquid level gauge light spot glass or glass-mica sight openings staggered, even number, lateral connection

### 1. Application

As direct liquid level gauge according to TRD or ASME.

PN	40	63	100
Max. allowable working pressure	PB = 32	50	80 bar
Max. allowable working temperature	TB = 239	265	296 °C

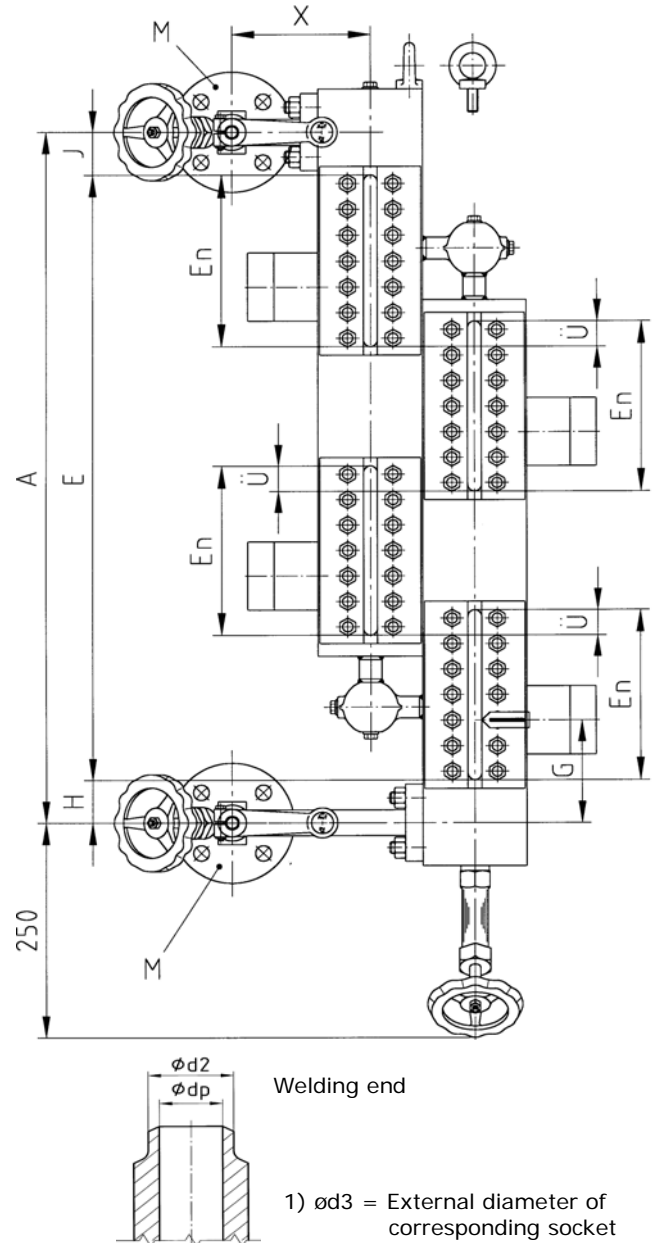
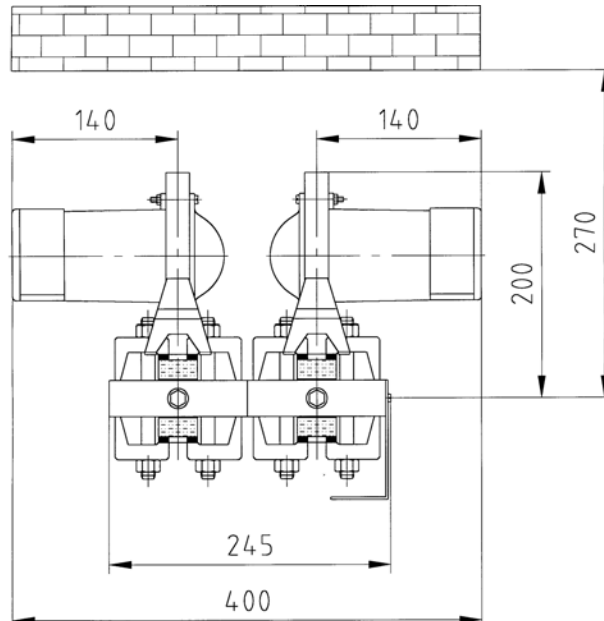
### 2. Version

- Possible sight length E, see summary 3-Ü 001
- As left-hand (see picture) or right-hand model (please indicate in case of order)
- Light spot glass (only up to PN 40)
- Light spot glass - mica
- Shutoff valve see leaflet 9-V 003 bis 9-V 009
- Drain valve see leaflet 9-V 502
- Illumination device see leaflet 3-AF 901, 3-AF 910 or 3-AF 920

Can be delivered on demand:

- Illuminated low-level-mark, according to IP 32

Version glass – mica with illumination device IP 32



Version	Size	Dimension A [mm]	Dimension E [mm]	Dimension En [mm]	Process connection M Flange		Material
PN	Dimension H [mm]	Dimension J [mm]	Dimension Ü [mm]	Dimension G [mm]	PN	DN	
PB bar					Contact faces	Form	
TB °C	Dimension X [mm]						
Shutoff valve	Type	Leaflet			Process connection M Welding end		Weight kg
Drain valve	Type				PN	DN	
Illumination device	IP						
Spare part list					$\phi dp$	$\phi d2$	$\phi d3$ <sup>1)</sup>
Mounting and operating instruction							
Jgema-Project no:		Equipment no:					

## Transparent liquid level gauge light spot glass or glass-mica sight openings staggered, uneven number

### 1. Application

As direct liquid level gauge according to TRD or ASME.

PN 40 63 100  
 Max. allowable working pressure PB = 32 50 80 bar  
 Max. allowable working temperature TB = 239 265 296 °C

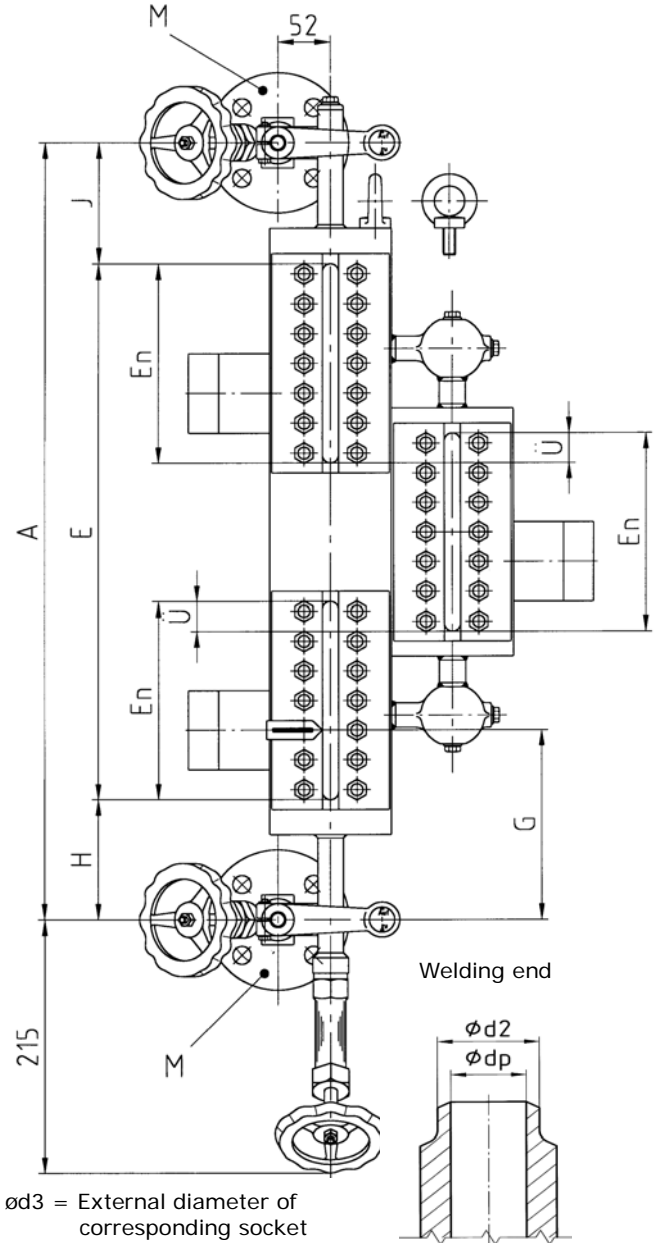
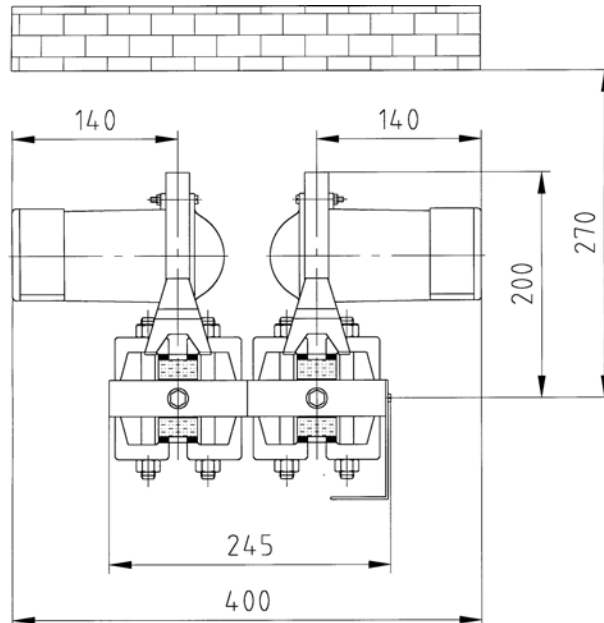
### 2. Version

- Possible sight length E, see summary 3-Ü 001
- As left-hand (see picture) or right-hand model (please indicate in case of order)
- Light spot glass (only up to PN 40)
- Light spot glass - mica
- Shutoff valve see leaflet 9-V 003 bis 9-V 009
- Drain valve see leaflet 9-V 502
- Illumination device see leaflet 3-AF 901, 3-AF 910 or 3-AF 920

Can be delivered on demand:

- Illuminated low-level-mark, according to IP 32

Version glass – mica with illumination device IP 32



Version	Size	Dimension A [mm]	Dimension E [mm]	Dimension En [mm]	Process connection M Flange		Material
					PN	DN	
PN	Dimension H [mm]	Dimension J [mm]	Dimension Ü [mm]	Dimension G [mm]	Contact faces	Form	
PB bar							
TB °C							
Shutoff valve	Type	Leaflet			Process connection M Welding end		Weight kg
Drain valve	Type				PN	DN	
Illumination device	IP				$\phi dp$	$\phi d2$	
Spare part list							
Mounting and operating instruction							
Jgema-Project no:		Equipment no:					



## Transparent liquid level gauge light spot glass or glass-mica sight openings staggered, uneven number, lateral connection

### 1. Application

As direct liquid level gauge according to TRD or ASME.

PN	40	63	100
Max. allowable working pressure	PB= 32	50	80 bar
Max. allowable working temperature	TB=239	265	296 °C

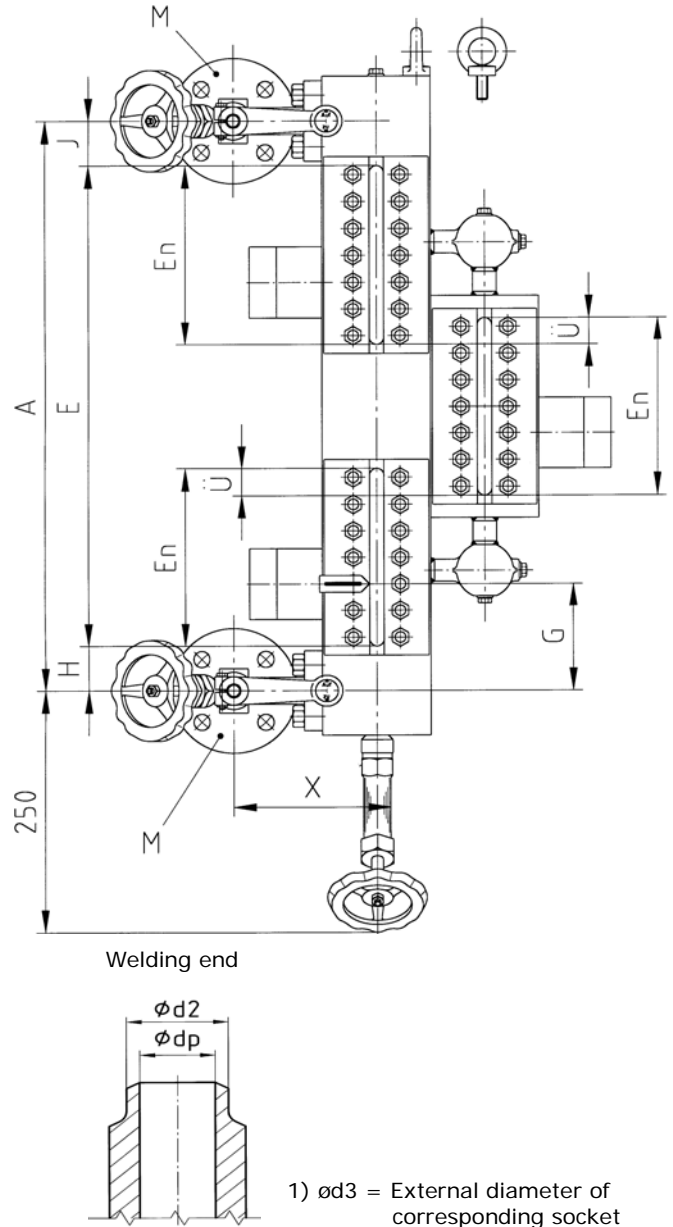
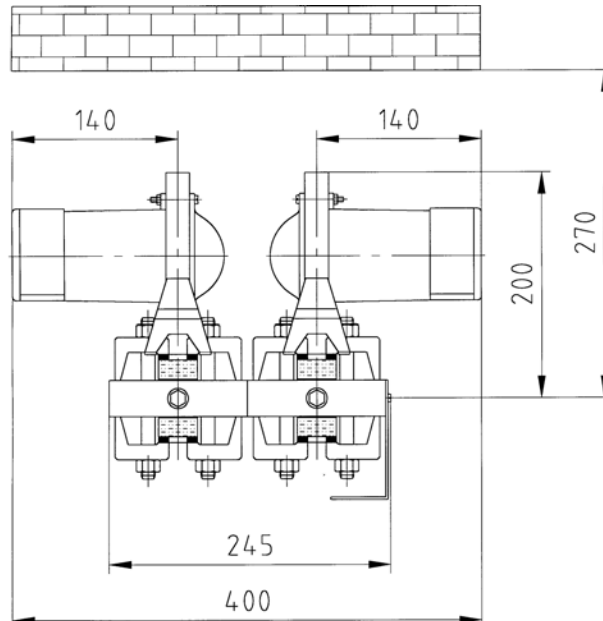
### 2. Version

- Possible sight length E, see summary 3-Ü 001
- As left-hand (see picture) or right-hand model (please indicate in case of order)
- Light spot glass (only up to PN 40)
- Light spot glass - mica
- Shutoff valve see leaflet 9-V 003 bis 9- V 009
- Drain valve see leaflet 9-V 502
- Illumination device see leaflet 3-AF 901, 3-AF 910 or 3-AF 920

Can be delivered on demand:

- Illuminated low-level-mark, according to IP 32

Version glass – mica with illumination device IP 32



Version	Size	Dimension A [mm]	Dimension E [mm]	Dimension En [mm]	Process connection M Flange		Material
					PN	DN	
PN	Dimension H [mm]	Dimension J [mm]	Dimension Ü [mm]	Dimension G [mm]	Contact faces	Form	
PB bar							
TB °C	Dimension X [mm]						
Shutoff valve	Type	Leaflet			Process connection M		Weight kg
Drain valve	Type				Welding end		
Illumination device	IP				PN	DN	
Spare part list					$\phi dp$	$\phi d2$	$\phi d3$ <sup>1)</sup>
Mounting and operating instruction							
Jgema-Project no:	Equipment no:						

## Transparent liquid level gauge light spot mica one sight opening, swivel connection

### 1. Application

As direct liquid level gauge according to TRD or ASME.

PN 40 63 100 160 250 320  
 Max. allowable working pressure  
 PB = 32 50 80 100 160 200 bar  
 Max. allowable working temperature  
 TB = 239 265 296 312 346 367 °C

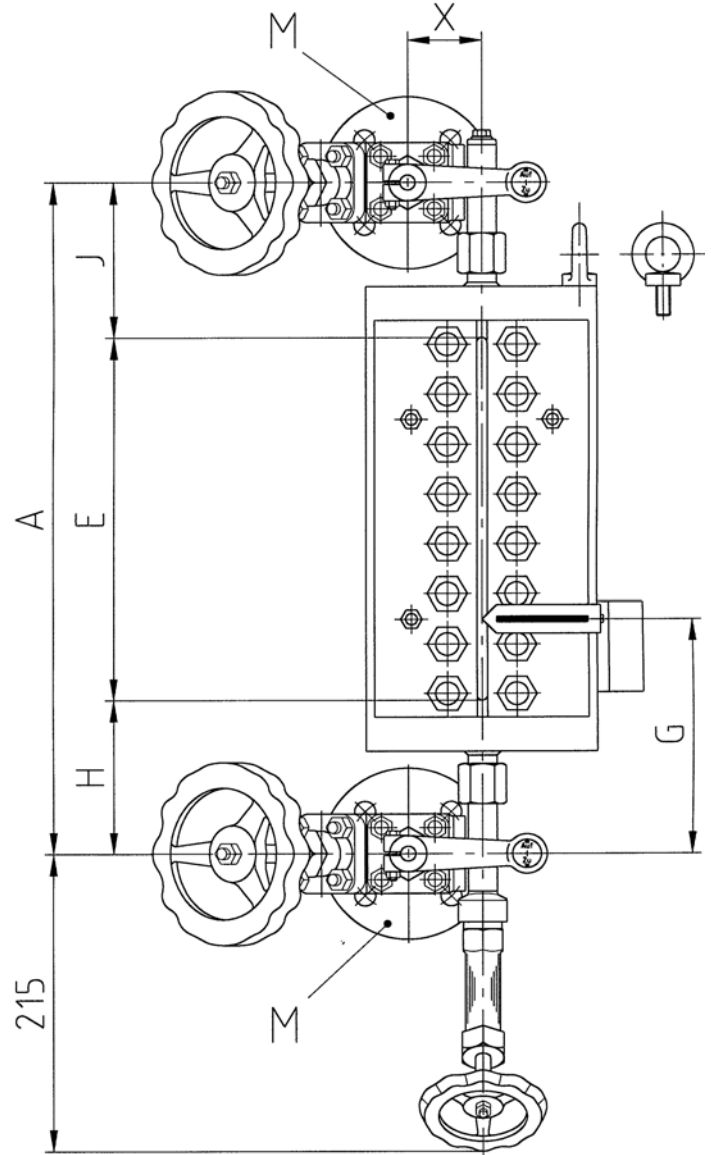
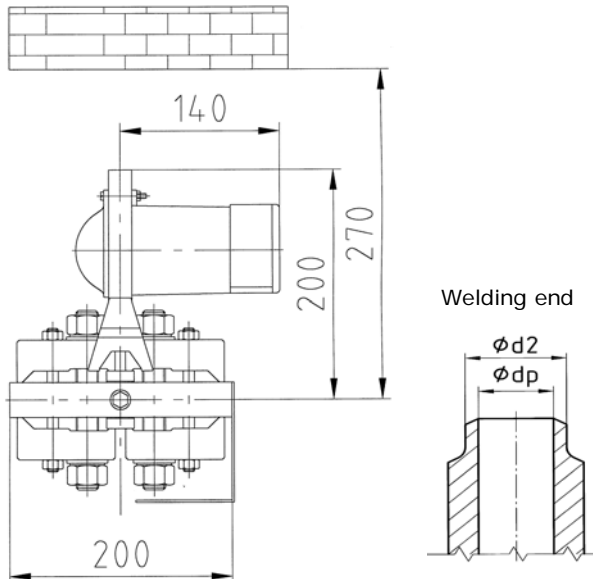
### 2. Version

- Possible sight length E, see summary 3-Ü 001
- As left-hand (see picture) or right-hand model (please indicate in case of order)
- Shutoff valve see leaflet 9-V 003 bis 9-V 011
- Drain valve see leaflet 9-V 502
- Illumination device see leaflet 3-AF 901, 3-AF 910 or 3-AF 920

Can be delivered on demand:

- Illuminated low-level-mark, according to IP 32

Version mica with illumination device IP 32



1)  $\phi d3$  = External diameter of corresponding socket

Version	Size	Dimension A [mm]	Dimension E [mm]	Dimension H [mm]	Process connection M Flange		Material
					PN	DN	
PN		Dimension J	Dimension G	Dimension X	Contact faces	Form	
PB bar							
TB °C							
Shutoff valve	Type	Leaflet			Process connection M		Weight kg
Drain valve	Type				Welding end		
Illumination device	IP				PN	DN	
Spare part list				$\phi dp$	$\phi d2$	$\phi d3$ <sup>1)</sup>	
Mounting and operating instruction							
Jgema-Project no:		Equipment no:					

## Transparent liquid level gauge light spot mica one sight opening, fixed

### 1. Application

As direct liquid level gauge according to TRD or ASME.

PN 40 63 100 160 250 320  
 Max. allowable working pressure  
 PB = 32 50 80 100 160 200 bar  
 Max. allowable working temperature  
 TB = 239 265 296 312 346 367 °C

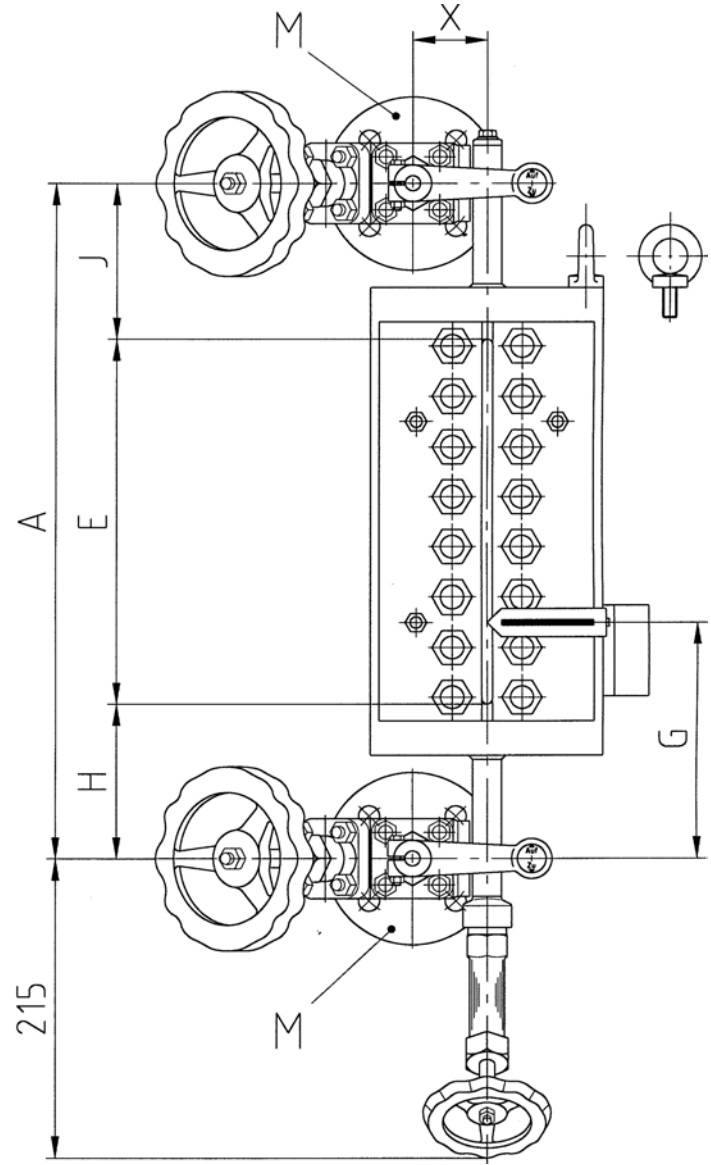
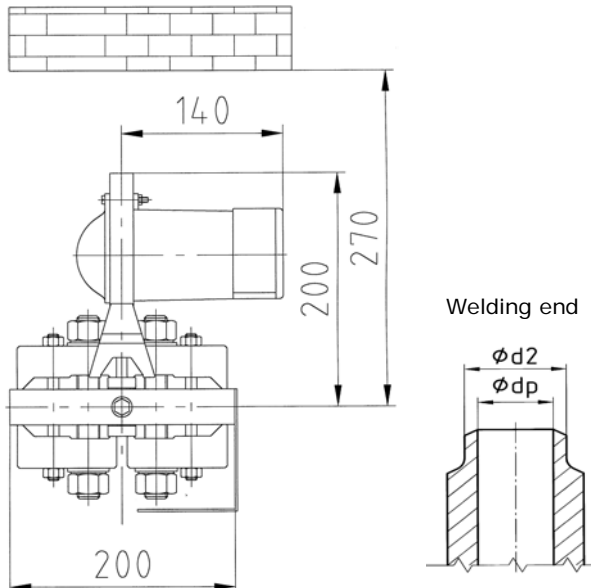
### 2. Version

- Possible sight length E, see summary 3-Ü 001
- As left-hand (see picture) or right-hand model (please indicate in case of order)
- Shutoff valve see leaflet 9-V 003 bis 9-V 011
- Drain valve see leaflet 9-V 502
- Illumination device see leaflet 3-AF 901, 3-AF 910 or 3-AF 920

Can be delivered on demand:

- Illuminated low-level-mark, according to IP 32

Version mica with illumination device IP 32



1)  $\phi d3$  = External diameter of corresponding socket

Version	Size	Dimension A [mm]	Dimension E [mm]	Dimension H [mm]	Process connection M Flange		Material
					PN	DN	
PN		Dimension J	Dimension G	Dimension X	Contact faces	Form	
PB bar							
TB °C							
Shutoff valve	Type	Leaflet			Process connection M		Weight kg
Drain valve	Type				Welding end		
Illumination device	IP				PN	DN	
Spare part list				$\phi dp$	$\phi d2$	$\phi d3$ <sup>1)</sup>	
Mounting and operating instruction							
Jgema-Project no:		Equipment no:					

## Transparent liquid level gauge light spot mica one sight opening, lateral connection

### 1. Application

As direct liquid level gauge according to TRD or ASME.

PN 40 63 100 160 250 320

Max. allowable working pressure

PB = 32 50 80 100 160 200 bar

Max. allowable working temperature

TB = 239 265 296 312 346 367 °C

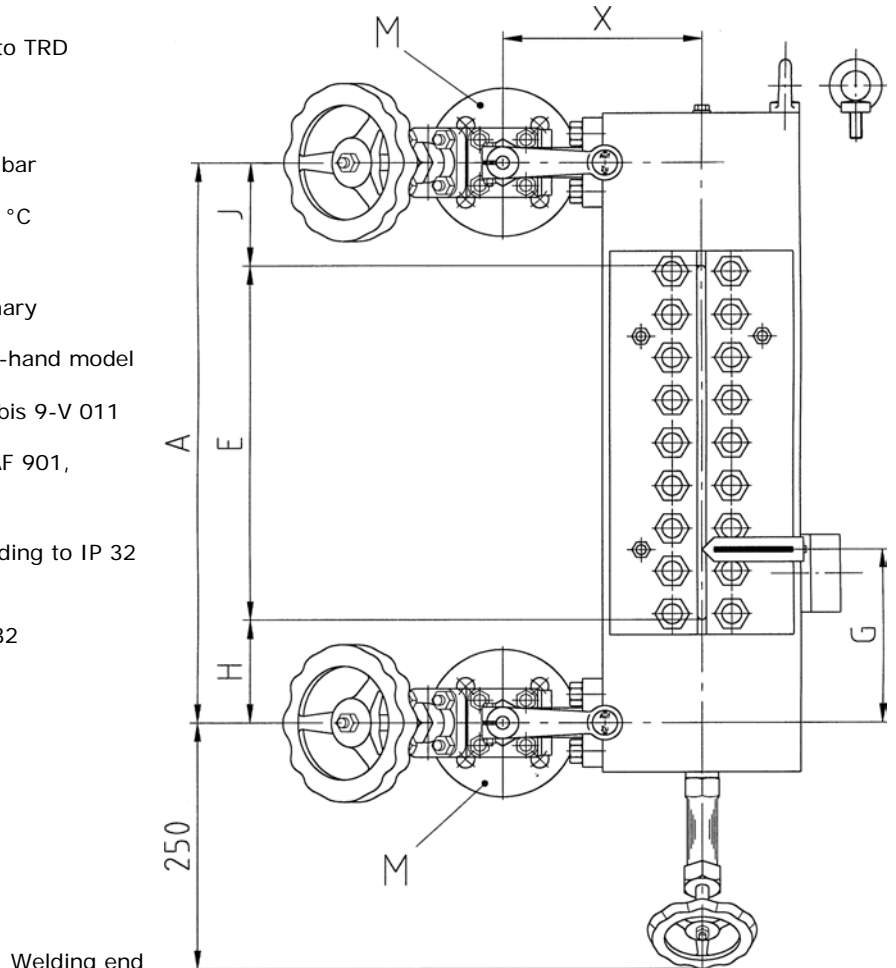
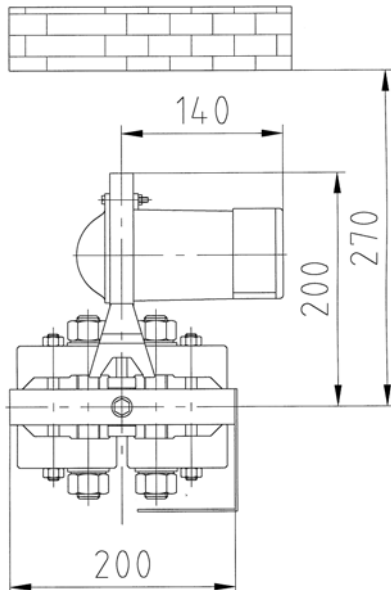
### 2. Version

- Possible sight length E, see summary 3-Ü 001
- As left-hand (see picture) or right-hand model (please indicate in case of order)
- Shutoff valve see leaflet 9-V 003 bis 9-V 011
- Drain valve see leaflet 9-V 502
- Illumination device see leaflet 3-AF 901, 3-AF 910 or 3-AF 920

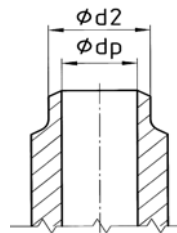
Can be delivered on demand:

- Illuminated low-level-mark, according to IP 32

Version mica with illumination device IP 32



Welding end



1)  $\phi d3$  = External diameter of corresponding socket

Version	Size	Dimension A [mm]	Dimension E [mm]	Dimension H [mm]	Process connection M Flange		Material
					PN	DN	
PN		Dimension J	Dimension G	Dimension X	Contact faces	Form	
PB bar							
TB °C							
Shutoff valve	Type	Leaflet	Process connection M Welding end			Weight kg	
Drain valve	Type		PN	DN			
Illumination device	IP		$\phi dp$	$\phi d2$	$\phi d3$ <sup>1)</sup>		
Spare part list							
Mounting and operating instruction							
Jgema-Project no:		Equipment no:					

## Transparent liquid level gauge light spot mica multiple section, vertical arrangement

### 1. Application

As direct liquid level gauge according to TRD or ASME.

PN 40 63 100 160 250 320  
 Max. allowable working pressure  
 PB = 32 50 80 100 160 200 bar  
 Max. allowable working temperature  
 TB = 239 265 296 312 346 367 °C

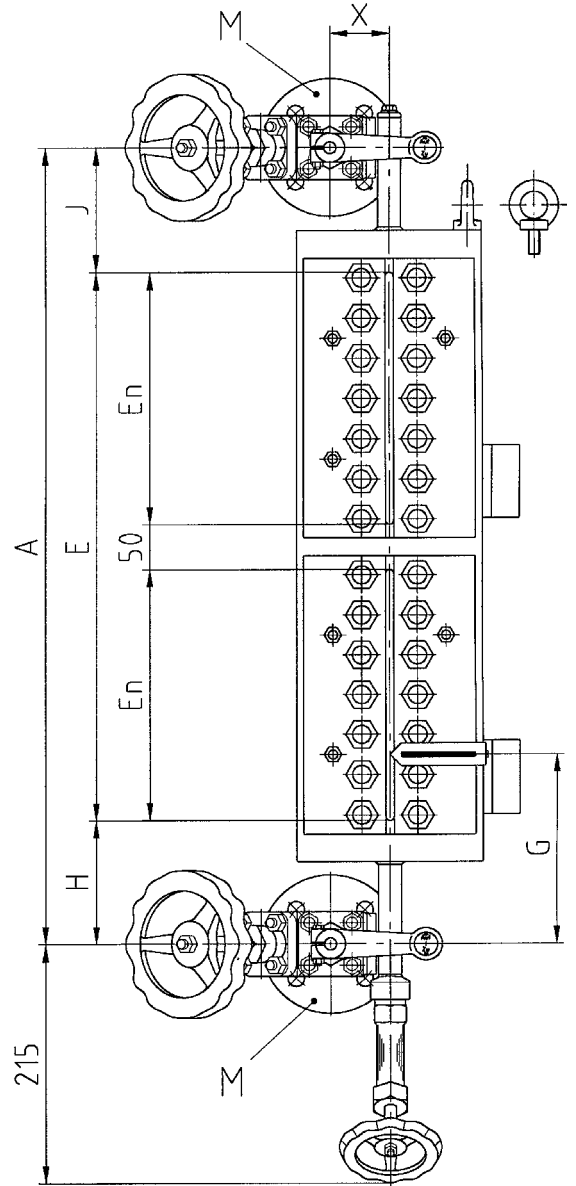
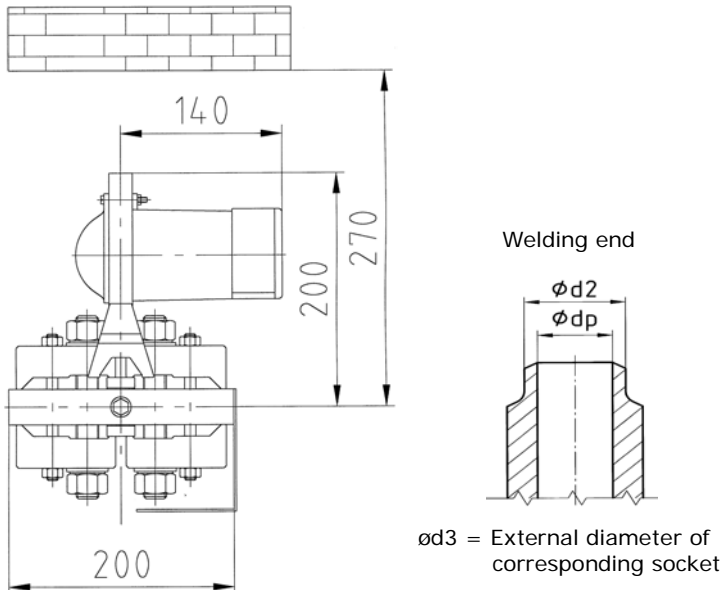
### 2. Version

- Possible sight length E, see summary 3-Ü 001
- As left-hand (see picture) or right-hand model (please indicate in case of order)
- Shutoff valve see leaflet 9-V 003 bis 9-V 011
- Drain valve see leaflet 9-V 502
- Illumination device see leaflet 3-AF 901, 3-AF 910 or 3-AF 920

Can be delivered on demand:

- Illuminated low-level-mark, according to IP 32

Version mica with illumination device IP 32



Version	Size	Dimension A [mm]	Dimension E [mm]	Dimension En [mm]	Process connection M Flange		Material
PN	Dimension H [mm]	Dimension J [mm]	Dimension G [mm]	Dimension X [mm]	PN	DN	
PB bar					Contact faces	Form	
TB °C							
Shutoff valve	Type	Leaflet	Process connection M Welding end			Weight kg	
Drain valve	Type						
Illumination device	IP						
Spare part list			PN	DN	DN		
Mounting and operating instruction			$\phi dp$	$\phi d2$	$\phi d3$ <sup>1)</sup>		
Jgema-Project no:	Equipment no:						

## Transparent liquid level gauge light spot mica sight opening, superposed, lateral connection

### 1. Application

As direct liquid level gauge according to TRD or ASME.

PN 40 63 100 160 250 320  
 Max. allowable working pressure  
 PB = 32 50 80 100 160 200 bar  
 Max. allowable working temperature  
 TB = 239 265 296 312 346 367 °C

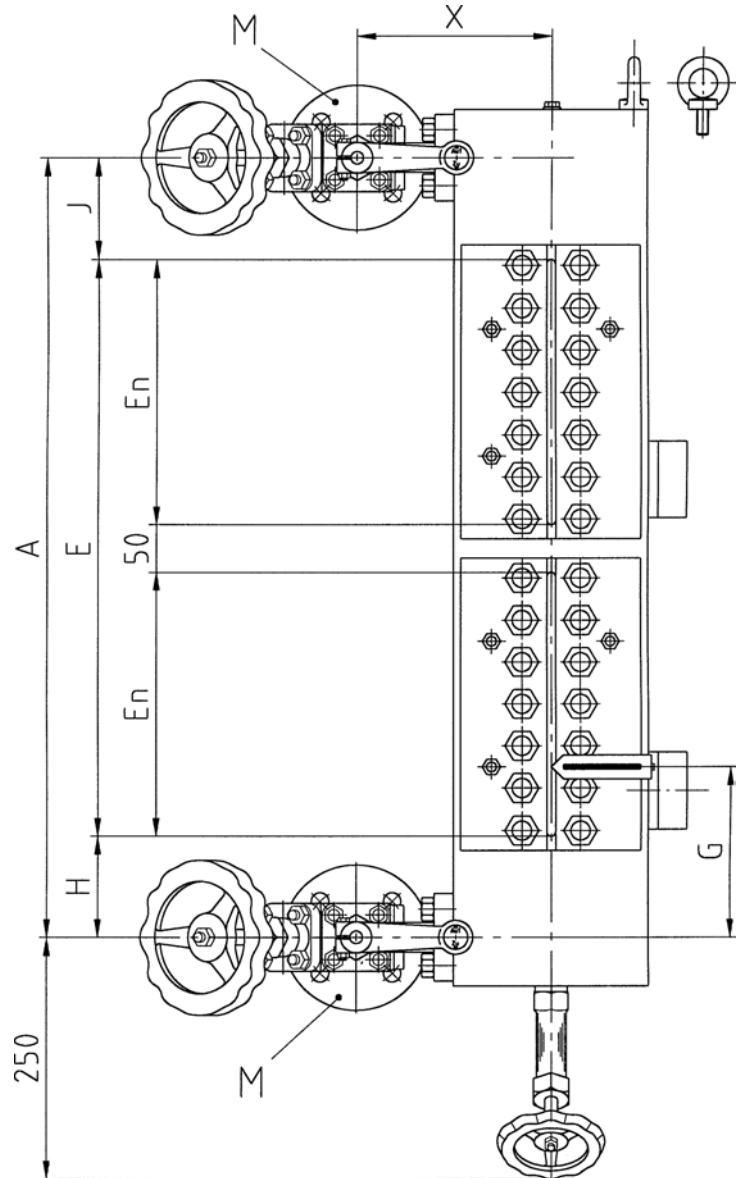
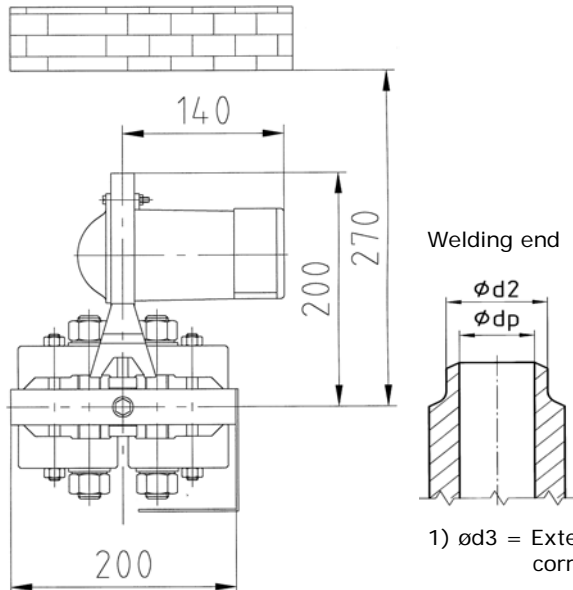
### 2. Version

- Possible sight length E, see summary 3-Ü 001
- As left-hand (see picture) or right-hand model
- (please indicate in case of order)
- Shutoff valve see leaflet 9-V 003 bis 9-V 011
- Drain valve see leaflet 9-V 502
- Illumination device see leaflet 3-AF 901, 3-AF 910 or 3-AF 920

Can be delivered on demand:

- Illuminated low-level-mark, according to IP 32

Version mica with illumination device IP 32



Version	Size	Dimension A [mm]	Dimension E [mm]	Dimension En [mm]	Process connection M Flange		Material
					PN	DN	
PN	Dimension H [mm]	Dimension J [mm]	Dimension G [mm]	Dimension X [mm]	Contact faces		Form
PB bar							
TB °C							
Shutoff valve	Type	Leaflet	Process connection M Welding end			Weight kg	
Drain valve	Type						
Illumination device	IP						
Spare part list					ødp	ød2	ød3 <sup>1)</sup>
Mounting and operating instruction							
Jgema-Project no:		Equipment no:					

## Transparent liquid level gauge light spot mica sight openings staggered, even number

### 1. Application

As direct liquid level gauge according to TRD or ASME.

PN 40 63 100 160 250 320

Max. allowable working pressure

PB = 32 50 80 100 160 200 bar

Max. allowable working temperature

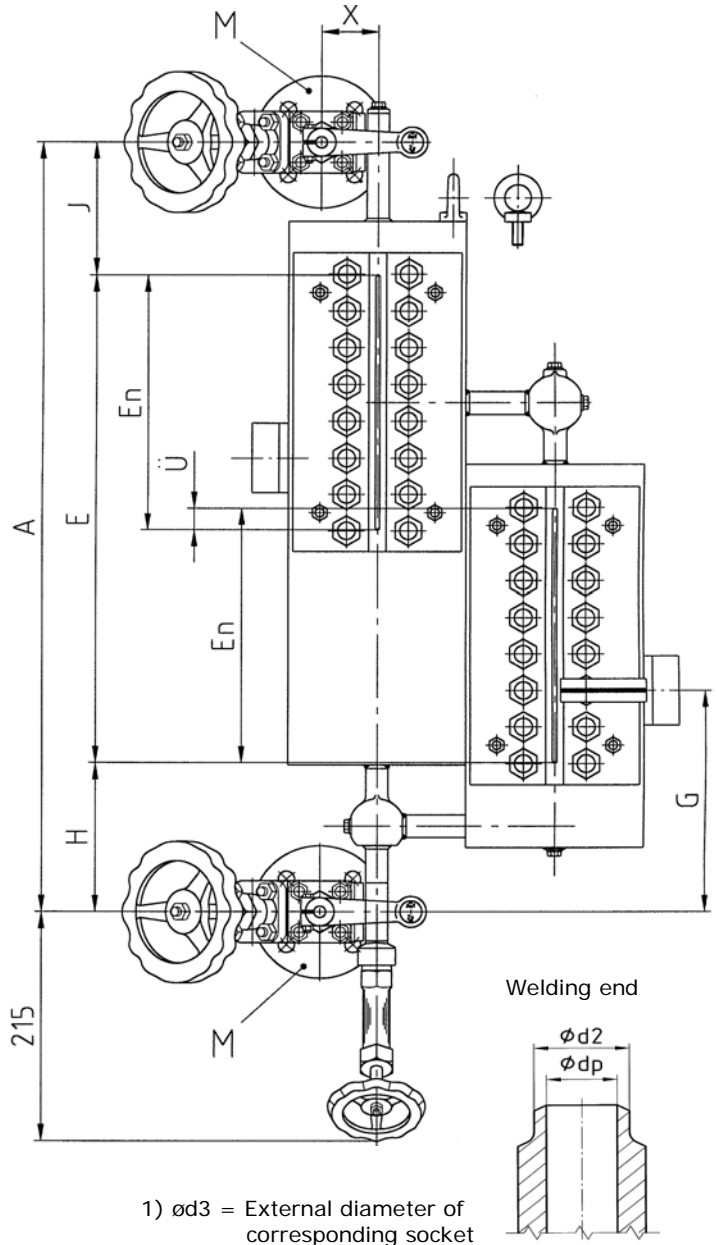
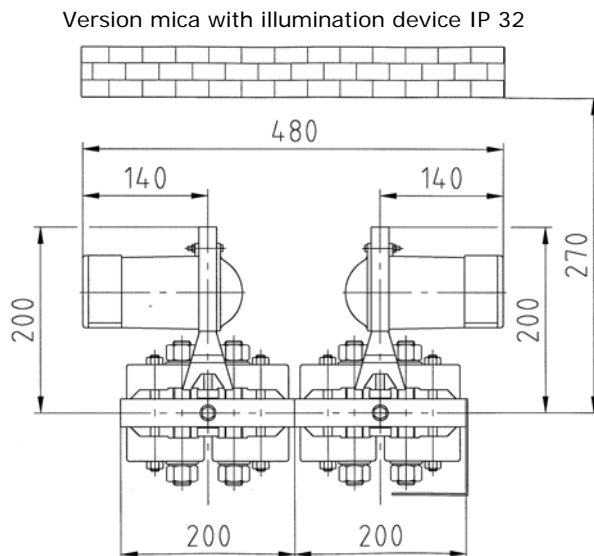
TB = 239 265 296 312 346 367 °C

### 2. Version

- Possible sight length E, see summary 3-Ü 001
- As left-hand (see picture) or right-hand model (please indicate in case of order)
- Shutoff valve see leaflet 9-V 003 bis 9-V 011
- Drain valve see leaflet 9-V 502
- Illumination device see leaflet 3-AF 901, 3-AF 910 or 3-AF 920

Can be delivered on demand:

- Illuminated low-level-mark, according to IP 32



Version	Size	Dimension A [mm]	Dimension E [mm]	Dimension En [mm]	Process connection M Flange		Material
					PN	DN	
PN	Dimension H [mm]	Dimension J [mm]	Dimension G [mm]	Dimension Ü [mm]	Contact faces		Form
PB bar							
TB °C	Dimension X [mm]						
Shutoff valve	Type	Leaflet			Process connection M		Weight kg
Drain valve	Type		Welding end				
Illumination device	IP		PN	DN			
Spare part list				ødp	ød2	ød3 <sup>1)</sup>	
Mounting and operating instruction							
Jgema-Project no:		Equipment no:					

## Transparent liquid level gauge light spot mica sight openings staggered, even number, lateral connection

### 1. Application

As direct liquid level gauge according to TRD or ASME.

PN 40 63 100 160 250 320  
 Max. allowable working pressure  
 PB = 32 50 80 100 160 200 bar  
 Max. allowable working temperature  
 TB = 239 265 296 312 346 367 °C

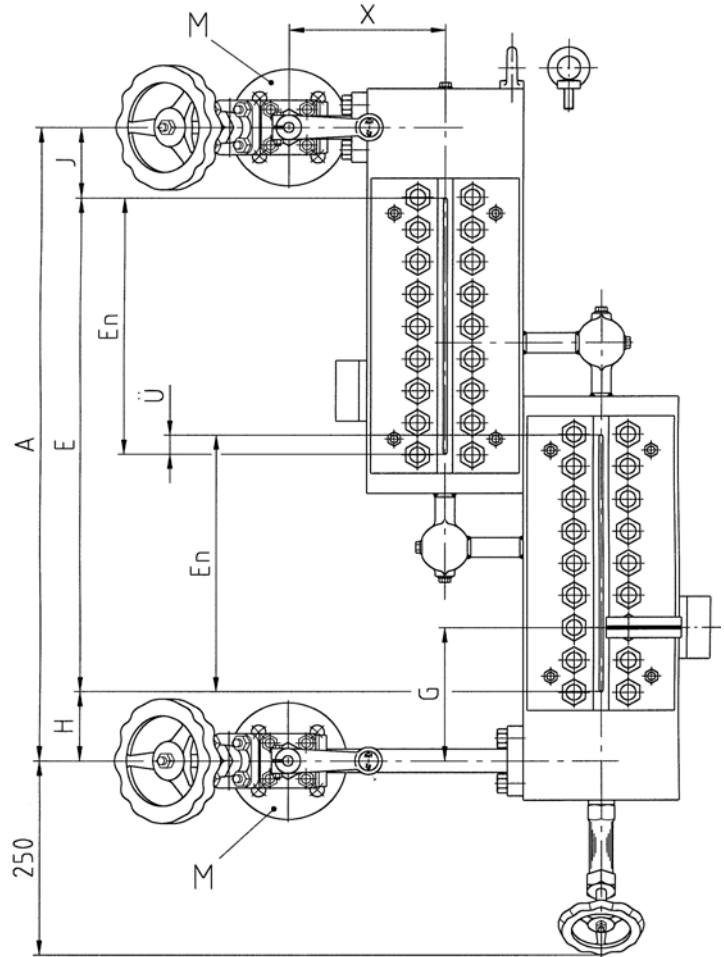
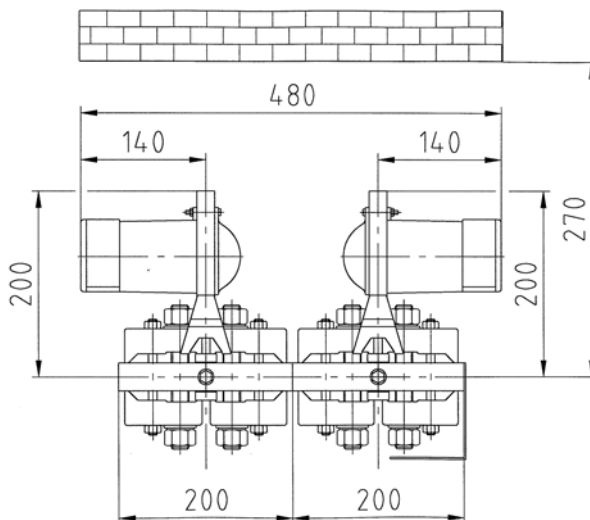
### 2. Version

- Possible sight length E, see summary 3-Ü 001
- As left-hand (see picture) or right-hand model (please indicate in case of order)
- Shutoff valve see leaflet 9-V 003 bis 9-V 011
- Drain valve see leaflet 9-V 502
- Illumination device see leaflet 3-AF 901, 3-AF 910 or 3-AF 920

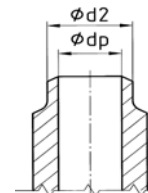
Can be delivered on demand:

- Illuminated low-level-mark, according to IP 32

Version mica with illumination device IP 32



Welding end



1)  $\phi d3$  = External diameter of corresponding socket

Version	Size	Dimension A [mm]	Dimension E [mm]	Dimension En [mm]	Process connection M Flange		Material	
PN	Dimension H [mm]	Dimension J [mm]	Dimension G [mm]	Dimension U [mm]	PN	DN		
PB bar					Contact faces	Form		
TB °C	Dimension X [mm]							
Shutoff valve	Type	Leaflet				Process connection M		Weight kg
Drain valve	Type					Welding end		
Illumination device	IP					PN	DN	
Spare part list				$\phi dp$	$\phi d2$	$\phi d3$ <sup>1)</sup>		
Mounting and operating instruction								
Jgema-Project no:			Equipment no:					



## Transparent liquid level gauge light spot mica sight openings staggered, uneven number

### 1. Application

As direct liquid level gauge according to TRD or ASME.

PN 40 63 100 160 250 320  
 Max. allowable working pressure  
 PB = 32 50 80 100 160 200 bar  
 Max. allowable working temperature  
 TB = 239 265 296 312 346 367 °C

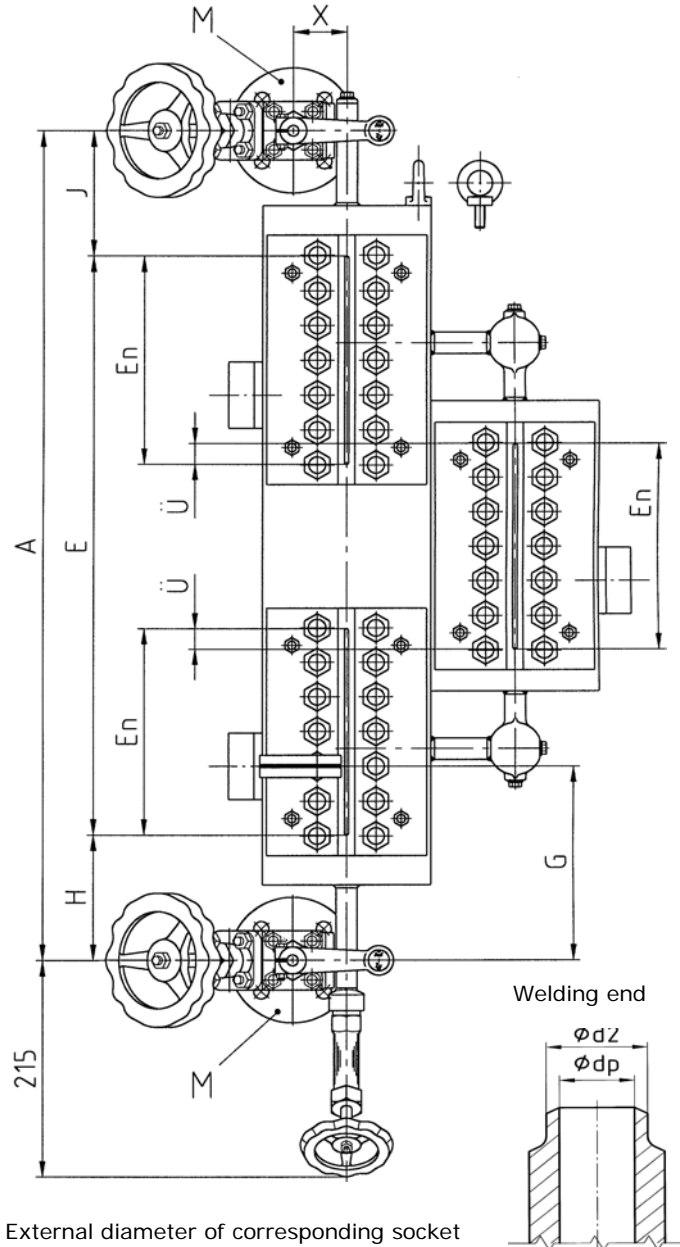
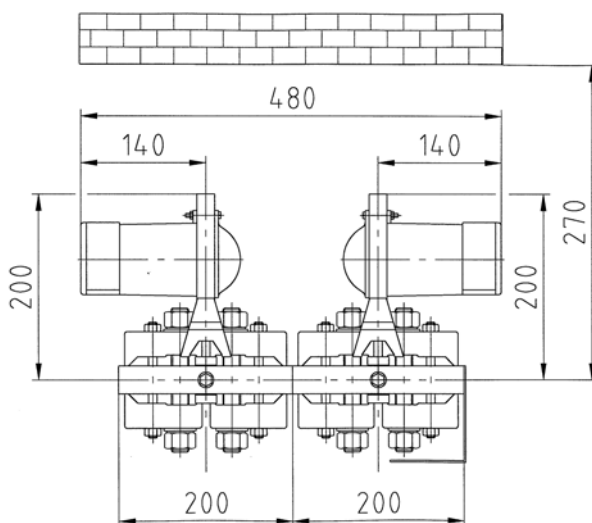
### 2. Version

- Possible sight length E, see summary 3-Ü 001
- As left-hand (see picture) or right-hand model (please indicate in case of order)
- Shutoff valve see leaflet 9-V 003 bis 9-V 011
- Drain valve see leaflet 9-V 502
- Illumination device see leaflet 3-AF 901, 3-AF 910 or 3-AF 920

Can be delivered on demand:

- Illuminated low-level-mark, according to IP 32

Version mica with illumination device IP 32



1) ød3 = External diameter of corresponding socket

Version	Size	Dimension A [mm]	Dimension E [mm]	Dimension En [mm]	Process connection M Flange		Material
					PN	DN	
PN	Dimension H [mm]	Dimension J [mm]	Dimension G [mm]	Dimension Ü [mm]	Contact faces	Form	
PB bar							
TB °C	Dimension X [mm]						
Shutoff valve	Type	Leaflet	Process connection M Welding end			Weight kg	
Drain valve	Type						
Illumination device	IP						
Spare part list			PN	DN	ødp	ød2	ød3 <sup>1)</sup>
Mounting and operating instruction							
Jgema-Project no:		Equipment no:					

## Transparent liquid level gauge light spot mica sight openings staggered, uneven number, lateral connection

### 1. Application

As direct liquid level gauge according to TRD or ASME.

PN 40 63 100 160 250 320

Max. allowable working pressure

PB = 32 50 80 100 160 200 bar

Max. allowable working temperature

TB = 239 265 296 312 346 367 °C

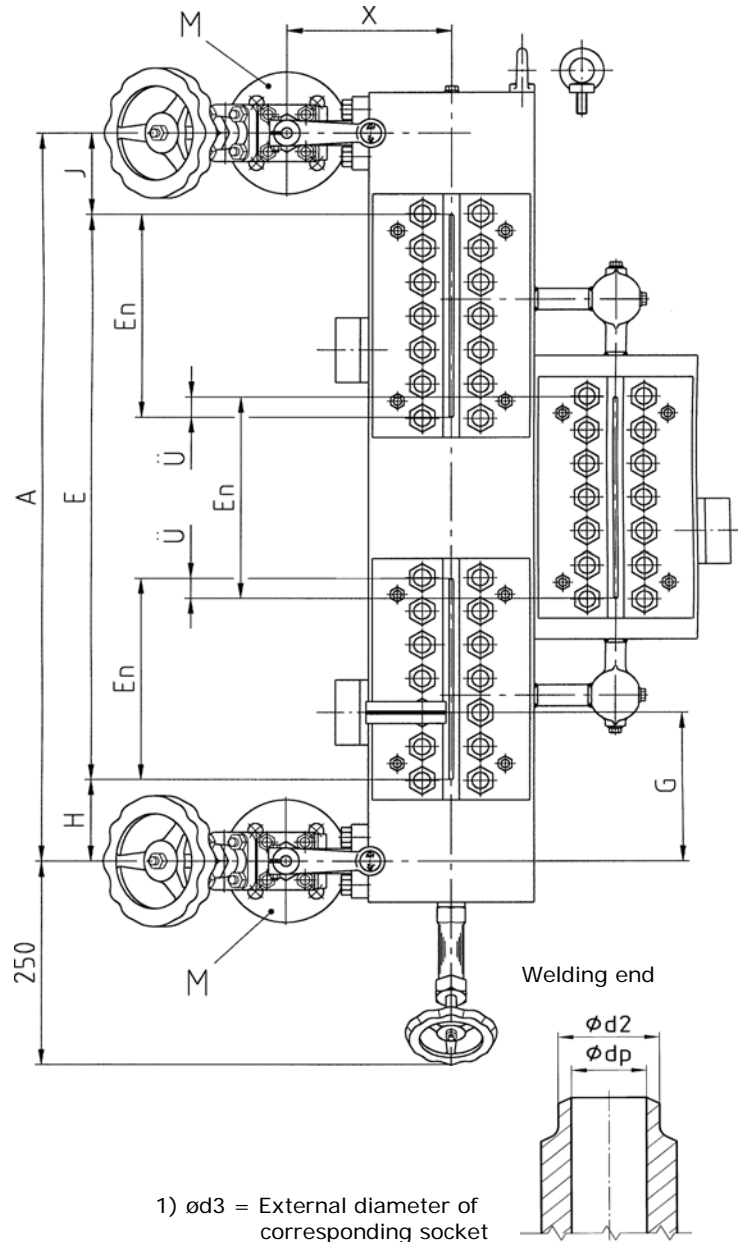
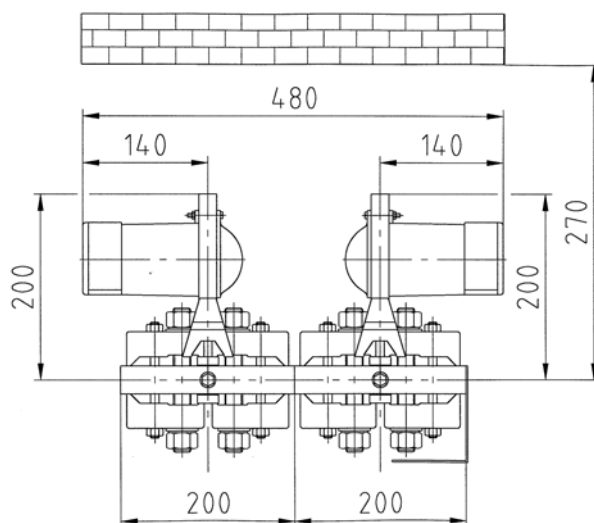
### 2. Version

- Possible sight length E, see summary 3-Ü 001
- As left-hand (see picture) or right-hand model (please indicate in case of order)
- Shutoff valve see leaflet 9-V 003 bis 9-V 011
- Drain valve see leaflet 9-V 502
- Illumination device see leaflet 3-AF 901, 3-AF 910 or 3-AF 920

Can be delivered on demand:

- Illuminated low-level-mark, according to IP 32

Version mica with illumination device IP 32



Version	Size	Dimension A [mm]	Dimension E [mm]	Dimension En [mm]	Process connection M Flange		Material
					PN	DN	
PN	Dimension H [mm]	Dimension J [mm]	Dimension G [mm]	Dimension U [mm]	Contact faces	Form	
PB bar							
TB °C	Dimension X [mm]						
Shutoff valve	Type	Leaflet	Process connection M Welding end			Weight kg	
Drain valve	Type						
Illumination device	IP						
Spare part list					PN	DN	
Mounting and operating instruction					$\phi dp$	$\phi d2$	$\phi d3$ <sup>1)</sup>
Jgema-Project no:		Equipment no:					