

## Transparent bicolor liquid level gauge “black-white” one sight opening, swivel connection

### 1. Application

As direct liquid level gauge according to TRD or ASME.

PN 40 63 100 160 250 320

Max. allowable working pressure

PB = 32 50 80 100 160 200 bar

Max. allowable working temperature

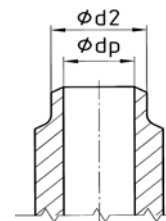
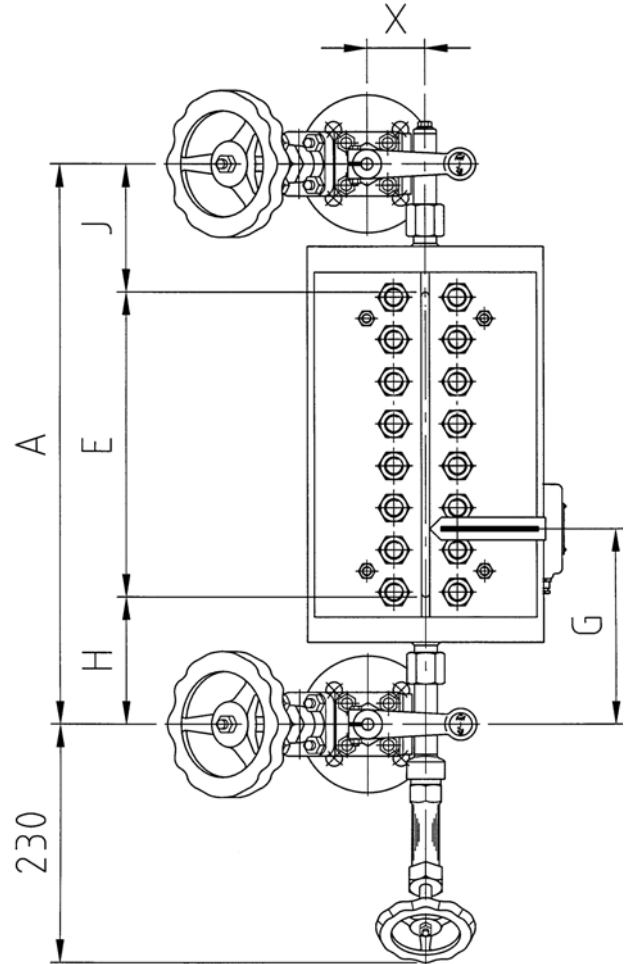
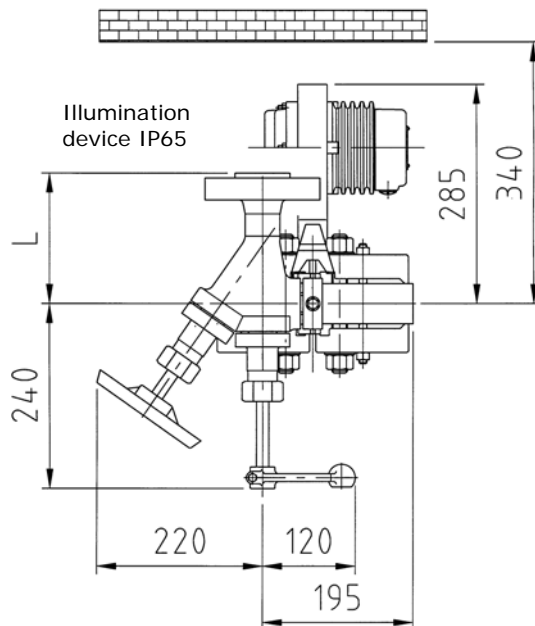
TB = 239 265 296 312 346 367 °C

### 2. Version

- Possible sight length E, see summary 4-Ü 001
- As left-hand (see picture) or right-hand model (please indicate in case of order)
- Shutoff valve see leaflet 9-V 003 bis 9-V 011
- Drain valve see leaflet 9-V 502
  - Illumination device see leaflet 4-AF 700, 4-AF 710.

#### Advice:

For best results, observe the liquid level standing directly in front of the sight opening. The liquid level is indicated in black and the steam in white. This type of level gauge is especially suitable for the video transfer of the liquid level to a monitor in the control station.



Welding end

1) ød3 = External diameter of corresponding socket

Version	Size	Dimension A [mm]	Dimension E [mm]	Dimension H [mm]	Process connection M		Material
					Flange	DN	
PN	Dimension J [mm]	Dimension G [mm]	Dimension X [mm]	Dimension L [mm]	PN	DN	
PB bar					Contact faces	Form	
TB °C							
Shutoff valve	Leaflet				Process connection M		Weight kg
Drain valve					Welding end		
Illumination device					PN	DN	
Spare part list					ødp	ød2	ød3 <sup>1)</sup>
Mounting and operating instruction							
Jgema-Project no:				Equipment no:			

## Transparent bicolor liquid level gauge “black-white” one sight opening, fixed

### 1. Application

As direct liquid level gauge according to TRD or ASME.

PN 40 63 100 160 250 320

Max. allowable working pressure

PB = 32 50 80 100 160 200 bar

Max. allowable working temperature

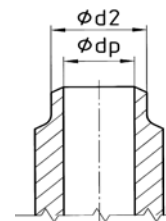
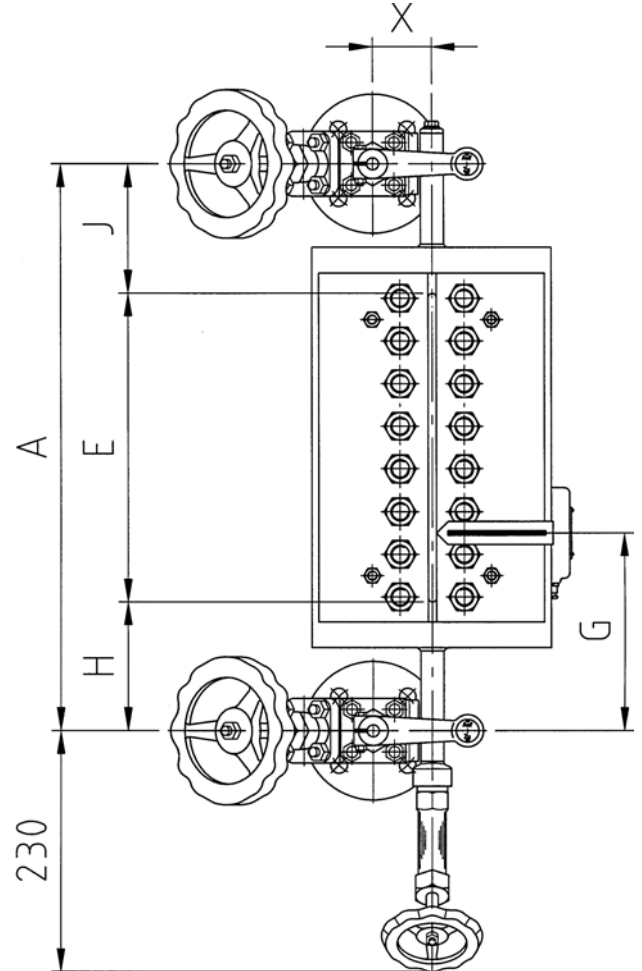
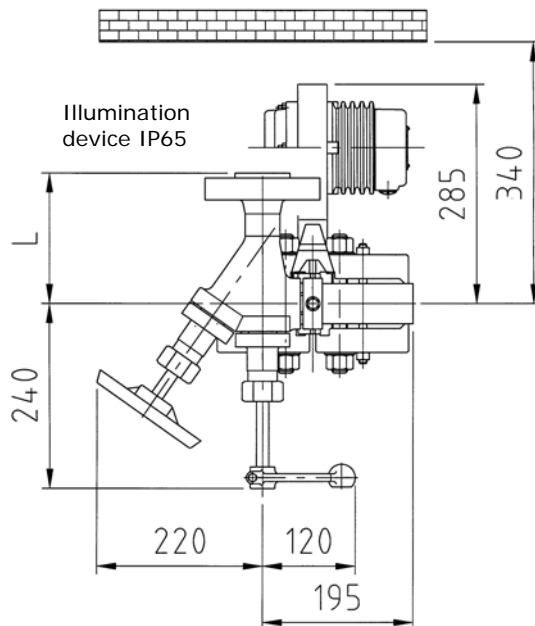
TB = 239 265 296 312 346 367 °C

### 2. Version

- Possible sight length E, see summary 4-Ü 001
- As left-hand (see picture) or right-hand model (please indicate in case of order)
- Shutoff valve see leaflet 9-V 003 bis 9-V 011
- Drain valve see leaflet 9-V 502
  - Illumination device see leaflet 4-AF 700, 4-AF 710.

#### Advice:

For best results, observe the liquid level standing directly in front of the sight opening. The liquid level is indicated in black and the steam in white. This type of level gauge is especially suitable for the video transfer of the liquid level to a monitor in the control station.



Welding end

1)  $\phi d3$  = External diameter of corresponding socket

Version	Size	Dimension A [mm]	Dimension E [mm]	Dimension H [mm]	Process connection M Flange		Material
PN	Dimension J [mm]	Dimension G [mm]	Dimension X [mm]	Dimension L [mm]	PN	DN	
PB bar					Contact faces	Form	
TB °C							
Shutoff valve	Leaflet _____			Process connection M			Weight kg
Drain valve				Welding end			
Illumination device				PN	DN		
Spare part list				$\phi dp$	$\phi d2$	$\phi d3$ <sup>1)</sup>	
Mounting and operating instruction							
Jgema-Project no: _____				Equipment no: _____			

## Transparent bicolor liquid level gauge "black-white" multiple section, vertical arrangement

### 1. Application

As direct liquid level gauge according to TRD or ASME.

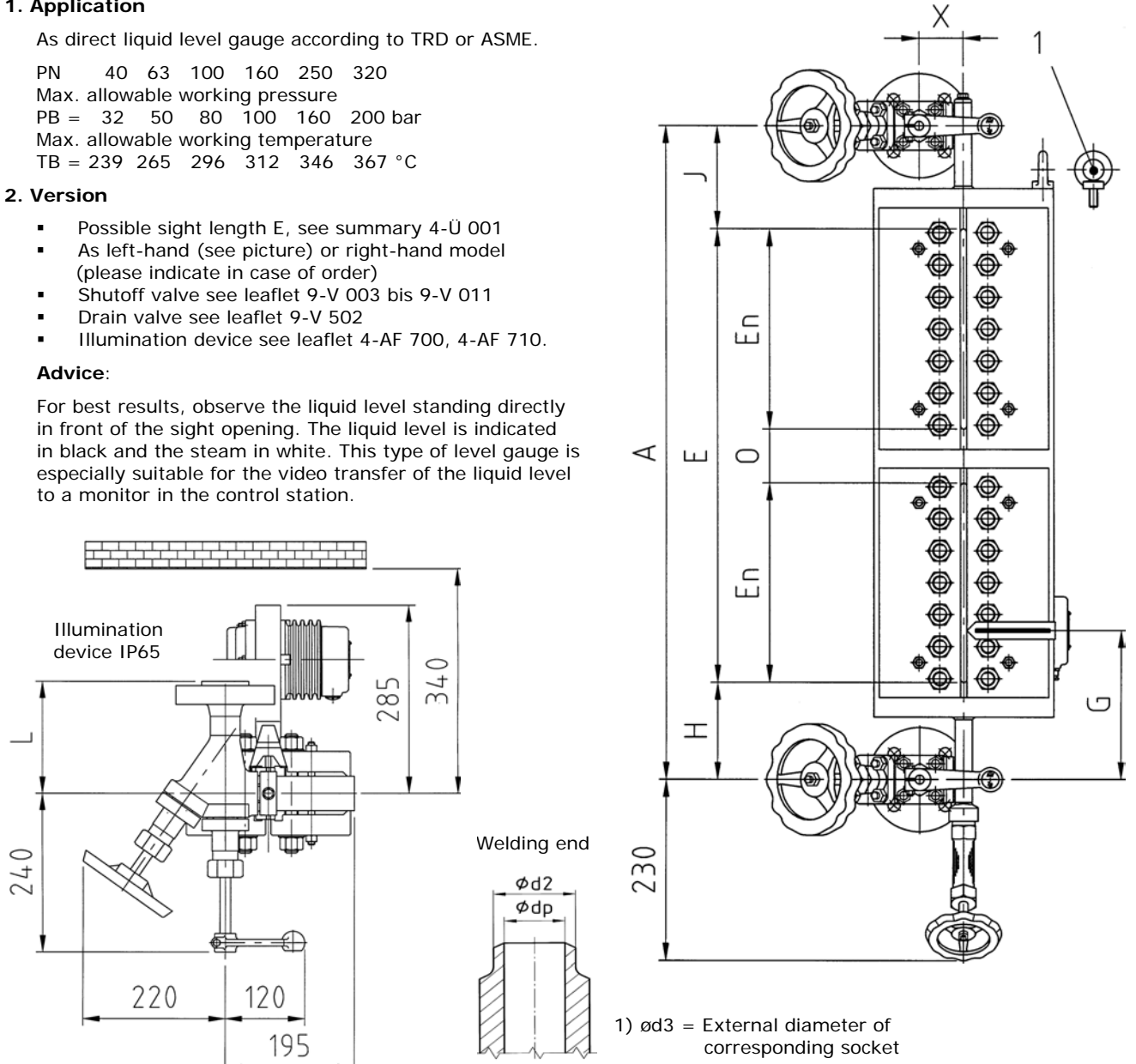
PN 40 63 100 160 250 320  
 Max. allowable working pressure  
 PB = 32 50 80 100 160 200 bar  
 Max. allowable working temperature  
 TB = 239 265 296 312 346 367 °C

### 2. Version

- Possible sight length E, see summary 4-Ü 001
- As left-hand (see picture) or right-hand model (please indicate in case of order)
- Shutoff valve see leaflet 9-V 003 bis 9-V 011
- Drain valve see leaflet 9-V 502
- Illumination device see leaflet 4-AF 700, 4-AF 710.

#### Advice:

For best results, observe the liquid level standing directly in front of the sight opening. The liquid level is indicated in black and the steam in white. This type of level gauge is especially suitable for the video transfer of the liquid level to a monitor in the control station.



Version	Size	Dimension A [mm]	Dimension E [mm]	Dimension En [mm]	Process connection M Flange		Material
					PN	DN	
PN	Dimension H [mm]	Dimension J [mm]	Dimension G [mm]	Dimension O [mm]	Contact faces		Form
PB bar							
TB °C	Dimension X [mm]		Dimension L [mm]				
Shutoff valve		Leaflet			Process connection M		Weight kg
Drain valve					Welding end		
Illumination device		PN		DN			
Spare part list		$\phi dp$	$\phi d2$	$\phi d3$ <sup>1)</sup>			
Mounting and operating instruction							
Jgema-Project no:				Equipment no:			

## Transparent bicolor liquid level gauge “black-white” sight openings staggered, even number

### 1. Application

As direct liquid level gauge according to TRD or ASME.

PN 40 63 100 160 250 320

Max. allowable working pressure

PB = 32 50 80 100 160 200 bar

Max. allowable working temperature

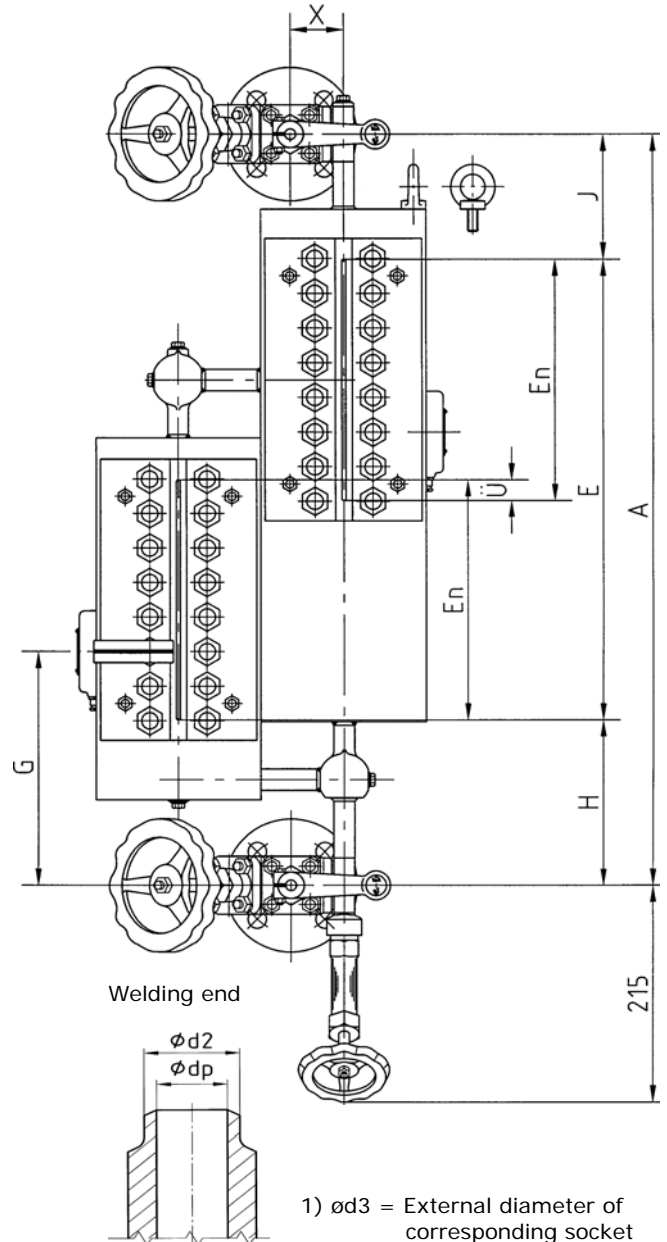
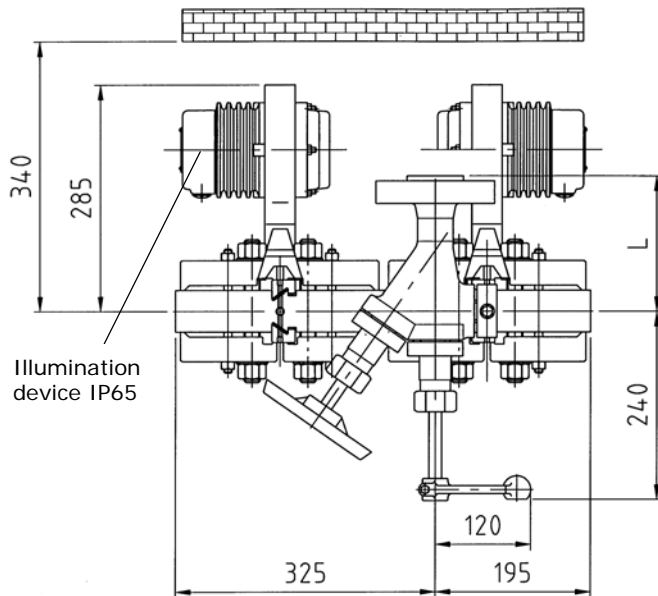
TB = 239 265 296 312 346 367 °C

### 2. Version

- Possible sight length E, see summary 4-Ü 001
- As left-hand (see picture) or right-hand model (please indicate in case of order)
- Shutoff valve see leaflet 9-V 003 bis 9-V 011
- Drain valve see leaflet 9-V 502
- Illumination device see leaflet 4-AF 700-GB, 4-AF 710-GB

#### Advice:

For best results, observe the liquid level standing directly in front of the sight opening. The liquid level is indicated in black and the steam in white. This type of level gauge is especially suitable for the video transfer of the liquid level to a monitor in the control station.



Version	Size	Dimension A [mm]	Dimension E [mm]	Dimension En [mm]	Process connection M Flange		Material
PN	Dimension H [mm]	Dimension J [mm]	Dimension G [mm]	Dimension Ü [mm]	PN	DN	
PB bar					Contact faces	Form	
TB °C	Dimension X [mm]						
Shutoff valve	Type	Leaflet			Process connection M Welding end		Weight kg
Drain valve	Type				PN	DN	
Illumination device	IP				$\phi dp$	$\phi d2$	$\phi d3$ <sup>1)</sup>
Spare part list							
Mounting and operating instruction							
Jgema-Project no:			Equipment no:				

## Transparent bicolor liquid level gauge “black-white” sight openings staggered, uneven number

### 1. Application

As direct liquid level gauge according to TRD or ASME.

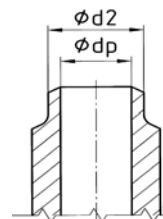
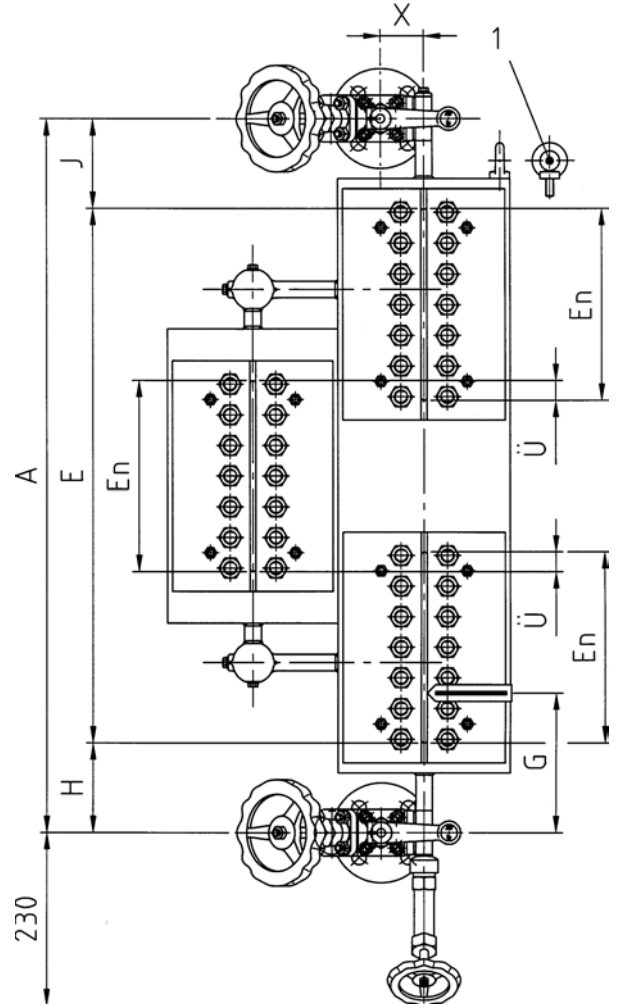
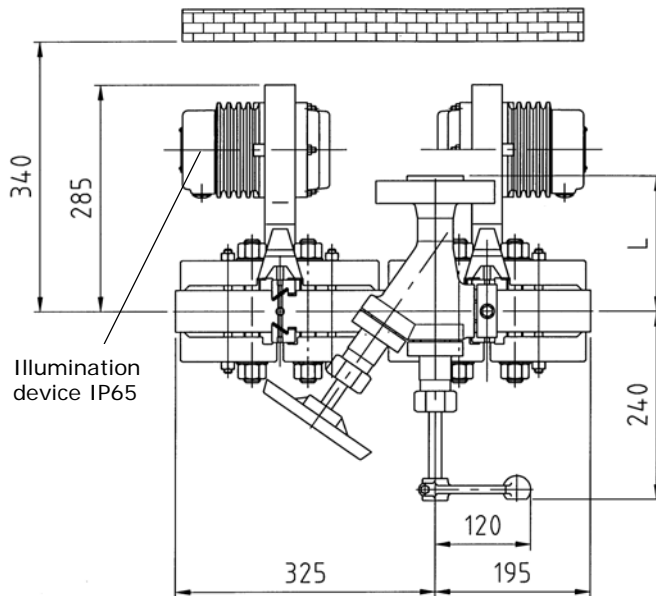
PN 40 63 100 160 250 320  
 Max. allowable working pressure  
 PB = 32 50 80 100 160 200 bar  
 Max. allowable working temperature  
 TB = 239 265 296 312 346 367 °C

### 2. Version

- Possible sight length E, see summary 4-Ü 001
- As left-hand (see picture) or right-hand model (please indicate in case of order)
- Shutoff valve see leaflet 9-V 003 bis 9-V 011
- Drain valve see leaflet 9-V 502
- Illumination device see leaflet 4-AF 700-GB, 4-AF 710-GB

#### Advice:

For best results, observe the liquid level standing directly in front of the sight opening. The liquid level is indicated in black and the steam in white. This type of level gauge is especially suitable for the video transfer of the liquid level to a monitor in the control station.



1)  $\phi d3$  = External diameter of corresponding socket

Version	Size	Dimension A [mm]	Dimension E [mm]	Dimension En [mm]	Process connection M Flange		Material
PN	Dimension H [mm]	Dimension J [mm]	Dimension G [mm]	Dimension Ü [mm]	PN	DN	
PB bar					Contact faces	Form	
TB °C	Dimension X [mm]		Dimension L [mm]				
Shutoff valve		Leaflet			Process connection M Welding end		Weight kg
Drain valve							
Illumination device						PN	DN
Spare part list					$\phi dp$	$\phi d2$	$\phi d3$ <sup>1)</sup>
Mounting and operating instruction							
Jgema-Project no:				Equipment no:			

## Transparent bicolor liquid level gauge “black-white” sight openings staggered, uneven number, lateral connection

### 1. Application

As direct liquid level gauge according to TRD or ASME.

PN 40 63 100 160 250 320

Max. allowable working pressure

PB = 32 50 80 100 160 200 bar

Max. allowable working temperature

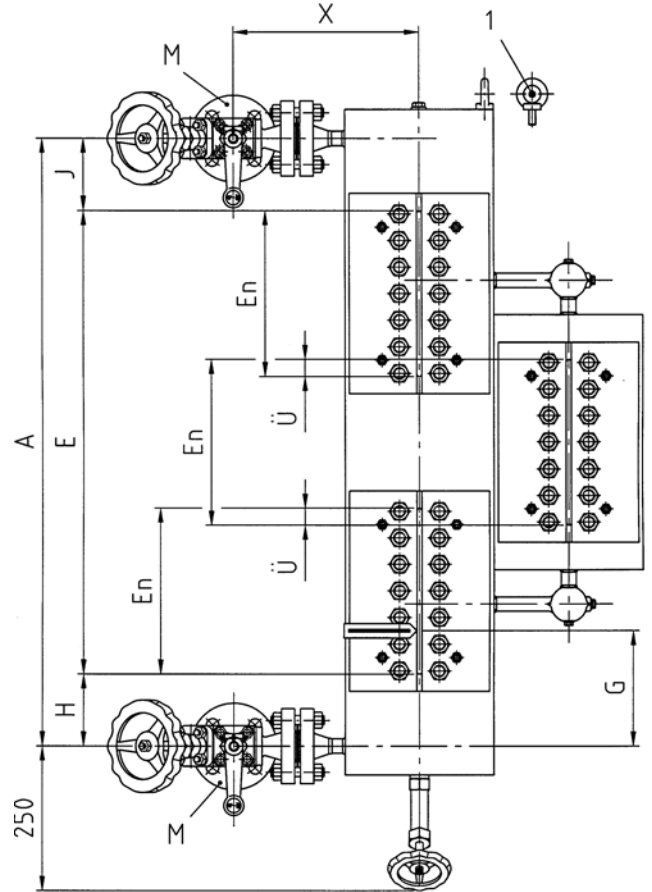
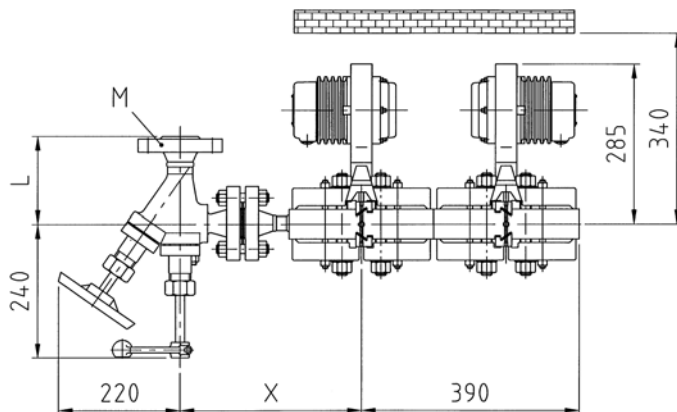
TB = 239 265 296 312 346 367 °C

### 2. Version

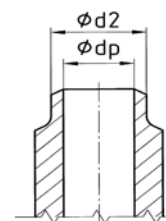
- Possible sight length E, see summary 4-Ü 001
- As left-hand (see picture) or right-hand model (please indicate in case of order)
- Shutoff valve see leaflet 9-V 003 bis 9-V 011
- Drain valve see leaflet 9-V 502
- Illumination device see leaflet 4-AF 700-GB, 4-AF 710-GB

#### Advice:

For best results, observe the liquid level standing directly in front of the sight opening. The liquid level is indicated in black and the steam in white. This type of level gauge is especially suitable for the video transfer of the liquid level to a monitor in the control station.



Welding end



1) ød3 = External diameter of corresponding socket

Version	Size	Dimension A [mm]	Dimension E [mm]	Dimension En [mm]	Process connection M Flange		Material
PN	Dimension H [mm]	Dimension J [mm]	Dimension G [mm]	Dimension Ü [mm]	PN	DN	
PB bar					Contact faces	Form	
TB °C	Dimension X [mm]		Dimension L [mm]				
Shutoff valve	Leaflet			Process connection M		Weight kg	
Drain valve				Welding end			
Illumination device				PN	DN		
Spare part list			ødp	ød2	ød3 <sup>1)</sup>		
Mounting and operating instruction							
Jgema-Project no:				Equipment no:			