



# ELECTROVANNE 3/2 NF ou NO 3 VOIES A COMMANDE DIRECTE SOLENOID VALVE 3/2 NC or NO 3 WAYS DIRECT OPERATED



## TYPE 30050 / 30051

### SPECIFICATIONS TECHNIQUES TECHNICAL SPECIFICATIONS

Fluides admis : air – eau - gaz - huile légère - vide  
 Pression différentielle : 0 à 14 bar maxi  
 Température du fluide : 100° C maxi  
 Température ambiante : -10° à +50° C maxi  
 Viscosité : 40 centistokes maxi  
 Position de fonctionnement : indifférente  
 Poids (avec bobine) : 140 g  
 Temps d'ouverture ou fermeture: 15 millisecondes maxi

Media: air – water – gas – light oil - vacuum  
 Pressure range : 0 to 14 bar max  
 Media temperature : 100° C max  
 Ambient temperature : -10° to +50° C max  
 Media viscosity : 40 centistokes max  
 Mounting : any position  
 Weight (including coil) : 140 g  
 Opening or closing time : 15 milliseconds maximum



### PRESSION PRESSURE

| Ø Raccord<br>Ø Port | Ø passage<br>(mm)<br>Ø seat (mm) | Kv<br>L/mn | Pression / Pressure (bar) |          |          | Etanchéité<br>seals | Fluid<br>temp.<br>Max<br>°C | Codification pour commande<br>Voir tableau des codifications<br>Code to order<br>See table of references |  |  |    |    |   |                    |                  |  |
|---------------------|----------------------------------|------------|---------------------------|----------|----------|---------------------|-----------------------------|--|--|--|----|----|---|--------------------|------------------|--|
|                     |                                  |            | mini                      | AC/CA 6W | CC/DC 6W |                     |                             |  | CC/DC 8W   |  |    |    |   |                    |                  |  |
| 3/2 NF / 3/2 NC     | 2 et 1<br>1/8 GAZ                | A 2        | 2⇒1                       | 0        | 14       | 14                  | -                           | NBR<br>EPDM<br>FKM   | 60<br>100<br>100   | 30850+10+0181+voltage+option<br>30850+30+0181+voltage+option<br>30850+20+0181+voltage+option |    |    |   |                    |                  |  |
|                     |                                  | E 3        | 3⇐1                       |          |          |                     |                             |  |  |  |    |    |   |                    |                  |  |
|                     |                                  | 0.8        | 0.4                       |          |          |                     |                             |  |  |  |    |    |   |                    |                  |  |
|                     |                                  | 1          | 0.6                       |          |          |                     |                             |  |  |  |    |    |   |                    |                  |  |
|                     |                                  | 1          | 0.55                      |          |          |                     |                             |  |  |  |    |    |   |                    |                  |  |
|                     |                                  | 1          | 0.6                       |          |          |                     |                             |  |  |  |    |    |   |                    |                  |  |
|                     | 2 & 1<br>1/8 BSP                 | 1.5        | 1.2                       | 0        | 7        | 7                   | -                           | NBR<br>EPDM<br>FKM   | 60<br>100<br>100   | 31550+10+0181+voltage+option<br>31550+30+0181+voltage+option<br>31550+20+0181+voltage+option |    |    |   |                    |                  |  |
|                     |                                  | 1.5        | 1                         |          |          |                     |                             |  |  |  |    |    |   |                    |                  |  |
|                     |                                  | 2          | 1.85                      |          |          |                     |                             |  |  |  |    |    |   |                    |                  |  |
|                     |                                  | 2          | 1.6                       |          |          |                     |                             |  |  |  |    |    |   |                    |                  |  |
|                     |                                  | 3          | 2.8                       |          |          |                     |                             |  |  |  |    |    |   |                    |                  |  |
|                     |                                  | 2          | 1.6                       |          |          |                     |                             |  |  |  |    |    |   |                    |                  |  |
| 3<br>M5x0.8         | 4                                | 3.8        | 0                         | 1        | -        | 1                   | NBR<br>EPDM<br>FKM          | 60<br>100<br>100   | 33050+10+0181+voltage+option<br>33050+30+0181+voltage+option<br>33050+20+0181+voltage+option |  |    |    |   |                    |                  |  |
|                     | 2                                | 1.6        |                           |          |          |                     |                             |  |  |  |    |    |   |                    |                  |  |
|                     | 0.8                              | 0.4        |                           |          |          |                     |                             |  |  | 0  | 14 | 14 | - | NBR<br>EPDM<br>FKM | 60<br>100<br>100 | 30851+10+0180+voltage+option<br>30851+30+0180+voltage+option<br>30851+20+0180+voltage+option |
|                     | 1                                | 0.55       |                           |          |          |                     |                             |  |  |  |    |    |   |                    |                  |  |
|                     | 1                                | 0.5        |                           |          |          |                     |                             |  |  |  |    |    |   |                    |                  |  |
|                     | 1                                | 0.55       |                           |          |          |                     |                             |  |  |  |    |    |   |                    |                  |  |
| 1.5                 | 1.1                              |            |                           |          |          |                     |                             |  |  |  |    |    |   |                    |                  |  |
| 1.5                 | 1.3                              |            |                           |          |          |                     |                             |  |  |  |    |    |   |                    |                  |  |
| 3/2 NO / 3/2 NO     | 3<br>M5x0.8                      | 2          | 1.5                       | 0        | 4        | 4                   | -                           | NBR<br>EPDM<br>FKM   | 60<br>100<br>100   | 32051+10+0180+voltage+option<br>32051+30+0180+voltage+option<br>32051+20+0180+voltage+option |    |    |   |                    |                  |  |
|                     |                                  | 2          | 1.8                       |          |          |                     |                             |  |  |  |    |    |   |                    |                  |  |

### CARACTERISTIQUES ELECTRIQUES ELECTRICAL DATA

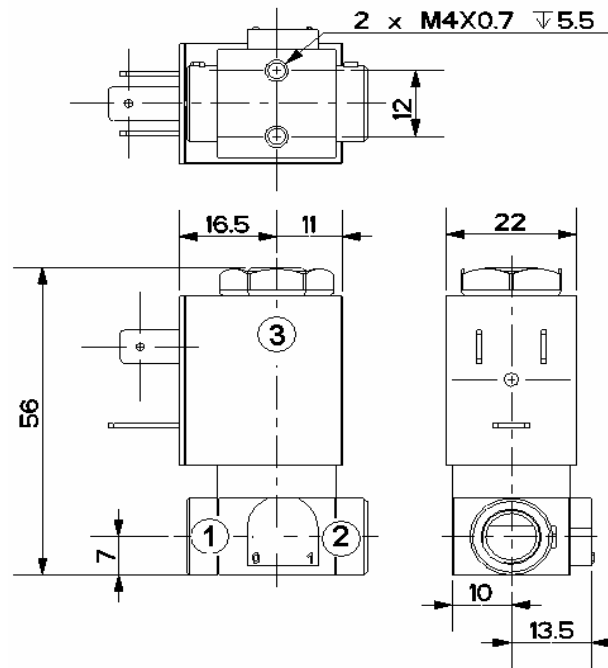
| Tension / voltage (-10% + 15%)<br>Durée d'enclenchement 100%<br>Continuous duty 100% | Taille<br>Size | Puissance / Power   |                        | Classe<br>d'isolation<br>Insulation class | Degré de<br>protection<br>Enclosure           | Raccord<br>électrique<br>Electrical<br>connections         |
|--|----------------|---------------------|------------------------|---|---|--|
|  |                | A l'appel<br>Inrush | Au maintien<br>Holding |   |   |  |
| ~ 12-24-48-110-230 (50 ou/or 60 Hz)  | 22             | 14 VA               | 9 VA                   | F 155°C                                   | IP 65<br>avec<br>connecteur<br>with connector | 3 fiches<br>3 spades<br>DIN 43650<br>DIN 40050<br>VDE 0110 |
| = 12-24-48   | 22             | 6 watts             |                        |   |   |  |
|  | 25             | 8 watts             |                        |   |   |  |



**ELECTROVANNE 3/2 NF ou NO**  
**3 VOIES A COMMANDE DIRECTE**  
**SOLENOID VALVE 3/2 NC or NO**  
**3 WAYS DIRECT OPERATED**

**TYPE 30050 / 30051**

**ENCOMBREMENT**  
**OVERALL DIMENSIONS**



**CONSTRUCTION**  
**CONSTRUCTION**

**Corps : laiton**  
**Tube et pièces internes : acier inoxydable**  
**Joints et clapets : NBR ou EPDM ou FKM**  
**Bobine surmoulée : polyamide**

*Body : brass*  
*Tube and internal parts : stainless steel*  
*Seals and gaskets : NBR or EPDM or FKM*  
*Moulded coil : polyamide*

**OPTIONS**  
**OPTIONS**

**Connecteur PG9 – DIN 43650 B**  
**Vis de réglage de débit**  
**Ouverture manuelle**  
**Echappement en 1/8 GAZ**

*Connector PG9 – DIN 43650 B*  
*Flow control*  
*Manual override*  
*Exhaust : 1/8 BSP*

**KITS DE MAINTENANCE**  
**REPAIR KIT**

| Désignation<br><i>designation</i>                                 | Codification pour commande<br><i>Code to order</i>   |
|---|--|
| <b>Bobine</b><br><i>Coil</i>                                      | <b>Voir tableau des codifications bobines</b><br><i>See table of coils references</i>            |
| <b>Noyau équipé + joints</b><br><i>Complete plunger + O'rings</i> | <b>KIT30050 ou KIT30051+ matière d'étanchéité</b><br><i>KIT30050 or KIT30051+ seals material</i> |